

## Product datasheet for **TA339562**

### H13 Rabbit Polyclonal Antibody

#### Product data:

Product Type:	Primary Antibodies
Applications:	WB
Recommended Dilution:	WB
Reactivity:	Mouse
Host:	Rabbit
Isotype:	IgG
Clonality:	Polyclonal
Immunogen:	The immunogen for anti-H13 antibody: synthetic peptide corresponding to a region of Mouse. Synthetic peptide located within the following region: IKLVFPQDLLEKGLEADNFAMLGDIVIPGIFIALLLRFDISLKKNTHT
Formulation:	Liquid. Purified antibody supplied in 1x PBS buffer with 0.09% (w/v) sodium azide and 2% sucrose. <i>Note that this product is shipped as lyophilized powder to China customers.</i>
Concentration:	lot specific
Purification:	Protein A purified
Conjugation:	Unconjugated
Storage:	Store at -20°C as received.
Stability:	Stable for 12 months from date of receipt.
Predicted Protein Size:	42 kDa
Gene Name:	histocompatibility 13
Database Link:	<a href="#">NP_034506</a> <a href="#">Entrez Gene 14950 Mouse</a> <a href="#">Q9D8V0</a>
Background:	H13 catalyzes intramembrane proteolysis of some signal peptides after they have been cleaved from a preprotein, resulting in the release of the fragment from the ER membrane into the cytoplasm. It is required to generate lymphocyte cell surface (HLA-E) epitopes derived from MHC class I signal peptides. Involved in the intramembrane cleavage of the integral membrane protein PSEN1 By similarity. It may play a role in graft rejection.

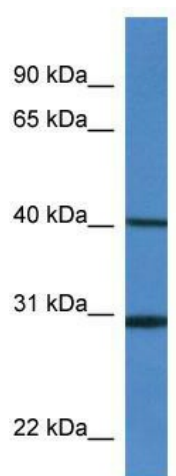


[View online »](#)

**Synonyms:** 1200006O09Rik; 4930443L17Rik; 5031424B04Rik; AV020344; H-13; Hm13; PSL3; Spp

**Note:** Immunogen Sequence Homology: Human: 100%; Dog: 93%; Pig: 93%; Rat: 93%; Horse: 93%; Mouse: 93%; Bovine: 93%; Rabbit: 93%; Guinea pig: 93%; Zebrafish: 92%

### Product images:



WB Suggested Anti-H13 Antibody; Titration: 1.0 ug/ml; Positive Control: Mouse Spleen