

Product datasheet for **TA339560**

PTDSS2 Rabbit Polyclonal Antibody

Product data:

| | |
|-------------------------|--|
| Product Type: | Primary Antibodies |
| Applications: | WB |
| Recommended Dilution: | WB |
| Reactivity: | Human |
| Host: | Rabbit |
| Isotype: | IgG |
| Clonality: | Polyclonal |
| Immunogen: | The immunogen for anti-PTDSS2 antibody: synthetic peptide directed towards the middle region of human PTDSS2. Synthetic peptide located within the following region: QAWLVAAITATELLIVVKYDPHTLTLSPFYISQCWTLGSLVLTWTVWR |
| Formulation: | Liquid. Purified antibody supplied in 1x PBS buffer with 0.09% (w/v) sodium azide and 2% sucrose. <i>Note that this product is shipped as lyophilized powder to China customers.</i> |
| Concentration: | lot specific |
| Purification: | Protein A purified |
| Conjugation: | Unconjugated |
| Storage: | Store at -20°C as received. |
| Stability: | Stable for 12 months from date of receipt. |
| Predicted Protein Size: | 56 kDa |
| Gene Name: | phosphatidylserine synthase 2 |
| Database Link: | NP_110410 Entrez Gene 81490 Human Q9BVG9 |



[View online »](#)

Background: Phosphatidylserine (PS) accounts for 5 to 10% of cell membrane phospholipids. In addition to its role as a structural component, PS is involved in cell signaling, blood coagulation, and apoptosis. PS is synthesized by a calcium-dependent base-exchange reaction catalyzed by PS synthases (EC 2.7.8.8), like PTDSS2, that exchange L-serine for the polar head group of phosphatidylcholine (PC) or phosphatidylethanolamine (PE) (Sturbois-Balcerzak et al., 2001 [PubMed 11084049]).

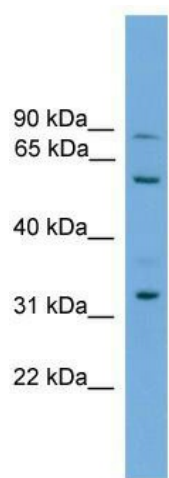
Synonyms: PSS2

Note: Immunogen Sequence Homology: Dog: 100%; Pig: 100%; Rat: 100%; Horse: 100%; Human: 100%; Mouse: 100%; Guinea pig: 100%

Protein Families: Transmembrane

Protein Pathways: Glycerophospholipid metabolism, Metabolic pathways

Product images:



WB Suggested Anti-PTDSS2 Antibody Titration:
0.2-1 ug/ml; ELISA Titer: 1: 312500; Positive
Control: 721_B cell lysate