

Product datasheet for **TA339559**

PTDSS2 Rabbit Polyclonal Antibody

Product data:

Product Type:	Primary Antibodies
Applications:	WB
Recommended Dilution:	WB
Reactivity:	Human
Host:	Rabbit
Isotype:	IgG
Clonality:	Polyclonal
Immunogen:	The immunogen for anti-PTDSS2 antibody: synthetic peptide directed towards the N terminal of human PTDSS2. Synthetic peptide located within the following region: GQATGPGEGRRSTESEVYDDGTNTFFWRAHTLTVLFILTCTLGIVTLLEE
Formulation:	Liquid. Purified antibody supplied in 1x PBS buffer with 0.09% (w/v) sodium azide and 2% sucrose. <i>Note that this product is shipped as lyophilized powder to China customers.</i>
Concentration:	lot specific
Purification:	Protein A purified
Conjugation:	Unconjugated
Storage:	Store at -20°C as received.
Stability:	Stable for 12 months from date of receipt.
Predicted Protein Size:	56 kDa
Gene Name:	phosphatidylserine synthase 2
Database Link:	NP_110410 Entrez Gene 81490 Human Q9BVG9



[View online »](#)

Background: Phosphatidylserine (PS) accounts for 5 to 10% of cell membrane phospholipids. In addition to its role as a structural component, PS is involved in cell signaling, blood coagulation, and apoptosis. PS is synthesized by a calcium-dependent base-exchange reaction catalyzed by PS synthases (EC 2.7.8.8), like PTDSS2, that exchange L-serine for the polar head group of phosphatidylcholine (PC) or phosphatidylethanolamine (PE) (Sturbois-Balcerzak et al., 2001 [PubMed 11084049]).

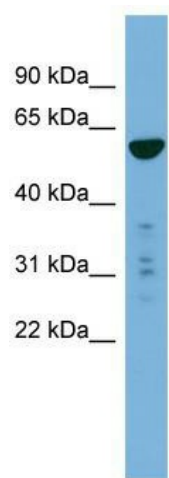
Synonyms: PSS2

Note: Immunogen Sequence Homology: Dog: 100%; Pig: 100%; Rat: 100%; Human: 100%; Mouse: 100%; Guinea pig: 100%; Horse: 93%

Protein Families: Transmembrane

Protein Pathways: Glycerophospholipid metabolism, Metabolic pathways

Product images:



WB Suggested Anti-PTDSS2 Antibody Titration: 0.2-1 ug/ml; ELISA Titer: 1: 312500; Positive Control: 293T cell lysate PTDSS2 is supported by BioGPS gene expression data to be expressed in HEK293T