

## Product datasheet for **TA339558**

### CLPTM1L Rabbit Polyclonal Antibody

#### Product data:

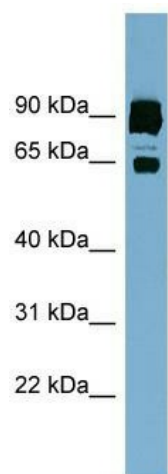
Product Type:	Primary Antibodies
Applications:	WB
Recommended Dilution:	WB
Reactivity:	Human
Host:	Rabbit
Isotype:	IgG
Clonality:	Polyclonal
Immunogen:	The immunogen for anti-CLPTM1L antibody: synthetic peptide directed towards the middle region of human CLPTM1L. Synthetic peptide located within the following region: KAFTYKAFNTFIDDVFAFIITMPTSHRLACFRDDVFLVLYQRWLYPVD
Formulation:	Liquid. Purified antibody supplied in 1x PBS buffer with 0.09% (w/v) sodium azide and 2% sucrose. <i>Note that this product is shipped as lyophilized powder to China customers.</i>
Concentration:	lot specific
Purification:	Protein A purified
Conjugation:	Unconjugated
Storage:	Store at -20°C as received.
Stability:	Stable for 12 months from date of receipt.
Predicted Protein Size:	62 kDa
Gene Name:	CLPTM1-like
Database Link:	<a href="#">NP_110409</a> <a href="#">Entrez Gene 81037 Human</a> <a href="#">Q96KA5</a>
Background:	CLPTM1L enhances cisplatin-mediated apoptosis, when overexpressed.
Synonyms:	CRR9
Note:	Immunogen Sequence Homology: Dog: 100%; Pig: 100%; Rat: 100%; Horse: 100%; Human: 100%; Mouse: 100%; Bovine: 100%; Rabbit: 100%; Guinea pig: 100%; Zebrafish: 93%



[View online »](#)

Protein Families: Transmembrane

### Product images:



WB Suggested Anti-CLPTM1L Antibody Titration:  
0.2-1 ug/ml; ELISA Titer: 1: 312500; Positive  
Control: ACHN cell lysate