

Product datasheet for **TA339557**

TMPRSS5 Rabbit Polyclonal Antibody

Product data:

Product Type:	Primary Antibodies
Applications:	WB
Recommended Dilution:	WB
Reactivity:	Human
Host:	Rabbit
Isotype:	IgG
Clonality:	Polyclonal
Immunogen:	The immunogen for anti-TMPRSS5 antibody: synthetic peptide directed towards the middle region of human TMPRSS5. Synthetic peptide located within the following region: SWRVHAGLVSHSAVRPHQGALVERIIPHPLYSAQNHDYDVALLRLQTALN
Formulation:	Liquid. Purified antibody supplied in 1x PBS buffer with 0.09% (w/v) sodium azide and 2% sucrose. <i>Note that this product is shipped as lyophilized powder to China customers.</i>
Concentration:	lot specific
Purification:	Protein A purified
Conjugation:	Unconjugated
Storage:	Store at -20°C as received.
Stability:	Stable for 12 months from date of receipt.
Predicted Protein Size:	22 kDa
Gene Name:	transmembrane protease, serine 5
Database Link:	NP_110397 Entrez Gene 80975 Human Q9H3S3
Background:	TMPRSS5 belongs to the serine protease family. Serine proteases are known to be involved in many physiological and pathological processes. TMPRSS5 may play a role in hearing.
Synonyms:	SPINESIN

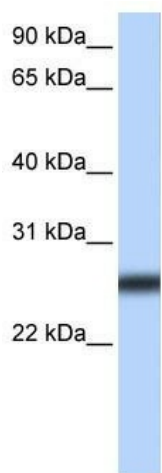


[View online »](#)

Note: Immunogen Sequence Homology: Rat: 100%; Horse: 100%; Human: 100%; Mouse: 100%; Bovine: 100%; Dog: 86%; Pig: 79%; Guinea pig: 79%

Protein Families: Druggable Genome, Protease, Transmembrane

Product images:



WB Suggested Anti-TMPRSS5 Antibody Titration: 0.2-1 ug/ml; Positive Control: NTERA2 cell lysate