

Product datasheet for **TA339556**

LIM2 Rabbit Polyclonal Antibody

Product data:

| | |
|-------------------------|--|
| Product Type: | Primary Antibodies |
| Applications: | WB |
| Recommended Dilution: | WB |
| Reactivity: | Human |
| Host: | Rabbit |
| Isotype: | IgG |
| Clonality: | Polyclonal |
| Immunogen: | The immunogen for anti-LIM2 antibody: synthetic peptide directed towards the N terminal of human LIM2. Synthetic peptide located within the following region: GSFAHQGLWRYCLGNKCYLQDSIGEPGQGPRAWGKSRADLGAQGHLY |
| Formulation: | Liquid. Purified antibody supplied in 1x PBS buffer with 0.09% (w/v) sodium azide and 2% sucrose. <i>Note that this product is shipped as lyophilized powder to China customers.</i> |
| Concentration: | lot specific |
| Purification: | Protein A purified |
| Conjugation: | Unconjugated |
| Storage: | Store at -20°C as received. |
| Stability: | Stable for 12 months from date of receipt. |
| Predicted Protein Size: | 24 kDa |
| Gene Name: | lens intrinsic membrane protein 2 |
| Database Link: | NP_085915 Entrez Gene 3982 Human P55344 |
| Background: | This gene encodes an eye lens-specific protein found at the junctions of lens fiber cells, where it may contribute to cell junctional organization. It acts as a receptor for calmodulin, and may play an important role in both lens development and cataract |
| Synonyms: | CTRCT19; MP17; MP19 |

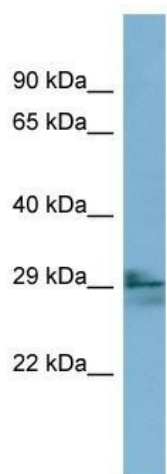


[View online »](#)

Note: Immunogen Sequence Homology: Human: 100%

Protein Families: Druggable Genome, Transmembrane

Product images:



WB Suggested Anti-LIM2 Antibody Titration: 0.2-1 ug/ml; ELISA Titer: 1: 62500; Positive Control: COLO205 cell lysate