

## Product datasheet for **TA339555**

### **MPIG6B Rabbit Polyclonal Antibody**

#### **Product data:**

Product Type:	Primary Antibodies
Applications:	WB
Recommended Dilution:	WB
Reactivity:	Human
Host:	Rabbit
Isotype:	IgG
Clonality:	Polyclonal
Immunogen:	The immunogen for anti-C6orf25 antibody: synthetic peptide directed towards the N terminal of human C6orf25. Synthetic peptide located within the following region: AVFLQLLP LLLSRAQGNPGASLDGRPGDRVNLSCGGVSHPIRWWAPSFP
Formulation:	Liquid. Purified antibody supplied in 1x PBS buffer with 0.09% (w/v) sodium azide and 2% sucrose. <i>Note that this product is shipped as lyophilized powder to China customers.</i>
Concentration:	lot specific
Purification:	Protein A purified
Conjugation:	Unconjugated
Storage:	Store at -20°C as received.
Stability:	Stable for 12 months from date of receipt.
Predicted Protein Size:	23 kDa
Gene Name:	chromosome 6 open reading frame 25
Database Link:	<a href="#">NP_079536</a> <a href="#">Entrez Gene 80739 Human</a> <a href="#">O95866</a>



[View online »](#)

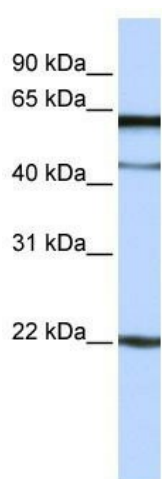
**Background:** The exact function of C6orf25 remains unknown. This gene is a member of the immunoglobulin (Ig) superfamily and is located in the major histocompatibility complex (MHC) class III region. The protein encoded by this gene is a glycosylated, plasma membrane-bound cell surface receptor, but soluble isoforms encoded by some transcript variants have been found in the endoplasmic reticulum and Golgi before being secreted. Multiple transcript variants encoding different isoforms have been found for this gene.

**Synonyms:** G6b; NG31

**Note:** Immunogen Sequence Homology: Dog: 100%; Human: 100%; Rat: 86%; Bovine: 79%

**Protein Families:** Druggable Genome, Transmembrane

### Product images:



WB Suggested Anti-C6orf25 Antibody Titration:  
0.2-1 ug/ml; ELISA Titer: 1: 62500; Positive  
Control: Jurkat cell lysate