

## Product datasheet for **TA339554**

### TTYH3 Rabbit Polyclonal Antibody

#### Product data:

Product Type:	Primary Antibodies
Applications:	WB
Recommended Dilution:	WB
Reactivity:	Human
Host:	Rabbit
Isotype:	IgG
Clonality:	Polyclonal
Immunogen:	The immunogen for anti-TTYH3 antibody: synthetic peptide directed towards the middle region of human TTYH3. Synthetic peptide located within the following region: IIATLVCSAGIAVGFYGNGETSDGIHRATYSLRHRANRTVAGVQDRVWDTA
Formulation:	Liquid. Purified antibody supplied in 1x PBS buffer with 0.09% (w/v) sodium azide and 2% sucrose. <i>Note that this product is shipped as lyophilized powder to China customers.</i>
Concentration:	lot specific
Purification:	Protein A purified
Conjugation:	Unconjugated
Storage:	Store at -20°C as received.
Stability:	Stable for 12 months from date of receipt.
Predicted Protein Size:	57 kDa
Gene Name:	tweety family member 3
Database Link:	<a href="#">NP_079526</a> <a href="#">Entrez Gene 80727 Human Q9C0H2</a>
Background:	This gene encodes a member of the tweety family of proteins. Members of this family function as chloride anion channels. The encoded protein functions as a calcium(2+)-activated large conductance chloride(-) channel.
Synonyms:	KIAA1691

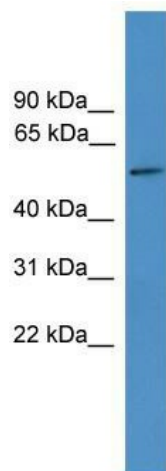


[View online »](#)

**Note:** Immunogen Sequence Homology: Dog: 100%; Pig: 100%; Rat: 100%; Horse: 100%; Human: 100%; Mouse: 100%; Bovine: 100%; Rabbit: 93%; Guinea pig: 93%

**Protein Families:** Transmembrane

**Product images:**



WB Suggested Anti-TTYH3 Antibody Titration: 0.2-1 ug/ml; ELISA Titer: 1: 312500; Positive Control: Human kidney