

Product datasheet for **TA339553**

REEP4 Rabbit Polyclonal Antibody

Product data:

Product Type:	Primary Antibodies
Applications:	WB
Recommended Dilution:	WB
Reactivity:	Human
Host:	Rabbit
Isotype:	IgG
Clonality:	Polyclonal
Immunogen:	The immunogen for anti-REEP4 antibody: synthetic peptide directed towards the N terminal of human REEP4. Synthetic peptide located within the following region: EIKMAFVLWLLSPYTKGASLLYRKVFVHPSLSRHEKEIDAYIVQAKERSYE
Formulation:	Liquid. Purified antibody supplied in 1x PBS buffer with 0.09% (w/v) sodium azide and 2% sucrose. <i>Note that this product is shipped as lyophilized powder to China customers.</i>
Concentration:	lot specific
Purification:	Protein A purified
Conjugation:	Unconjugated
Storage:	Store at -20°C as received.
Stability:	Stable for 12 months from date of receipt.
Predicted Protein Size:	29 kDa
Gene Name:	receptor accessory protein 4
Database Link:	NP_079508 Entrez Gene 80346 Human Q9H6H4
Background:	REEP4 belongs to the DP1 family. It may enhance the cell surface expression of odorant receptors.
Synonyms:	C8orf20; PP432; Yip2c

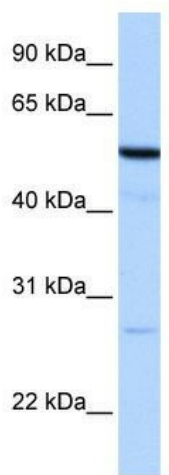


[View online »](#)

Note: Immunogen Sequence Homology: Dog: 100%; Pig: 100%; Rat: 100%; Human: 100%; Mouse: 100%; Guinea pig: 100%; Horse: 93%; Bovine: 93%; Rabbit: 93%

Protein Families: Druggable Genome, Transmembrane

Product images:



WB Suggested Anti-REEP4 Antibody Titration: 0.2-1 ug/ml; Positive Control: HepG2 cell lysate