

## Product datasheet for **TA339549**

### ULBP1 Rabbit Polyclonal Antibody

#### Product data:

Product Type:	Primary Antibodies
Applications:	WB
Recommended Dilution:	WB
Reactivity:	Human
Host:	Rabbit
Isotype:	IgG
Clonality:	Polyclonal
Immunogen:	The immunogen for anti-ULBP1 antibody: synthetic peptide directed towards the N terminal of human ULBP1. Synthetic peptide located within the following region: MAAAASPALLCLPLLHLLSGWSRAGWVDTHCLCYDFIITPKSRPEPQWC
Formulation:	Liquid. Purified antibody supplied in 1x PBS buffer with 0.09% (w/v) sodium azide and 2% sucrose. <i>Note that this product is shipped as lyophilized powder to China customers.</i>
Concentration:	lot specific
Purification:	Protein A purified
Conjugation:	Unconjugated
Storage:	Store at -20°C as received.
Stability:	Stable for 12 months from date of receipt.
Predicted Protein Size:	28 kDa
Gene Name:	UL16 binding protein 1
Database Link:	<a href="#">NP_079494</a> <a href="#">Entrez Gene 80329 Human</a> <a href="#">Q9BZM6</a>



[View online »](#)

**Background:**

ULBP1 is the ligand for the NKG2D receptor, together with at least ULBP2 and ULBP3. ULBPs activate multiple signaling pathways in primary NK cells, resulting in the production of cytokines and chemokines. Binding of ULBPs ligands to NKG2D induces calcium mobilization and activation of the JAK2, STAT5, ERK and PI3K kinase/Akt signal transduction pathway. In CMV infected cells, interacts with soluble CMV glycoprotein UL16. The interaction with UL16 blocked the interaction with the NKG2D receptor, providing a mechanism by which CMV infected cells might escape the immune system. UL16 also causes ULBP1 to be retained in the ER and cis-Golgi apparatus so that it does not reach the cell surface.

**Synonyms:**

RAET1I

**Note:**

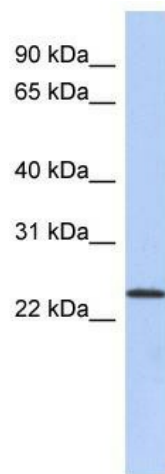
Immunogen Sequence Homology: Human: 100%

**Protein Families:**

Druggable Genome, Transmembrane

**Protein Pathways:**

Natural killer cell mediated cytotoxicity

**Product images:**

WB Suggested Anti-ULBP1 Antibody Titration: 0.2-1 ug/ml; ELISA Titer: 1: 312500; Positive Control: PANC1 cell lysate. ULBP1 is supported by BioGPS gene expression data to be expressed in PANC1