

Product datasheet for **TA339541**

ZNF667 Rabbit Polyclonal Antibody

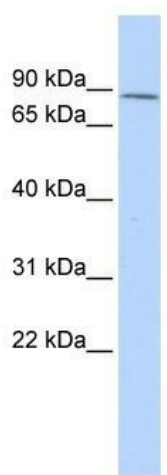
Product data:

Product Type:	Primary Antibodies
Applications:	WB
Recommended Dilution:	WB
Reactivity:	Human
Host:	Rabbit
Isotype:	IgG
Clonality:	Polyclonal
Immunogen:	The immunogen for anti-ZNF667 antibody: synthetic peptide directed towards the middle region of human ZNF667. Synthetic peptide located within the following region: RGFKKKSVMFVHKRIHAGEKIPENAKALSQSLQQRSHHLENPFKCRKCGK
Formulation:	Liquid. Purified antibody supplied in 1x PBS buffer with 0.09% (w/v) sodium azide and 2% sucrose.
Concentration:	lot specific
Purification:	Protein A purified
Conjugation:	Unconjugated
Storage:	Store at -20°C as received.
Stability:	Stable for 12 months from date of receipt.
Predicted Protein Size:	70 kDa
Gene Name:	zinc finger protein 667
Database Link:	NP_071386 Entrez Gene 63934 Human Q5HYK9
Background:	May be involved in transcriptional regulation.
Synonyms:	MIPU1
Note:	Immunogen Sequence Homology: Human: 100%; Pig: 79%; Horse: 79%; Bovine: 79%
Protein Families:	Transcription Factors



[View online »](#)

Product images:



WB Suggested Anti-ZNF667 Antibody Titration:
0.2-1 ug/ml; ELISA Titer: 1:312500; Positive
Control: 293T cell lysate