

## Product datasheet for **TA339540**

### SCAND2 (SCAND2P) Rabbit Polyclonal Antibody

#### Product data:

Product Type:	Primary Antibodies
Applications:	WB
Recommended Dilution:	WB
Reactivity:	Human
Host:	Rabbit
Isotype:	IgG
Clonality:	Polyclonal
Immunogen:	The immunogen for anti-SCAND2 antibody: synthetic peptide directed towards the n terminal of human SCAND2. Synthetic peptide located within the following region: MAVAVDQQIQTPSVQDLQIVKLEEDSHWEQEISLQGNYPGPETSCQSFWH
Formulation:	Liquid. Purified antibody supplied in 1x PBS buffer with 0.09% (w/v) sodium azide and 2% sucrose. <i>Note that this product is shipped as lyophilized powder to China customers.</i>
Concentration:	lot specific
Purification:	Protein A purified
Conjugation:	Unconjugated
Storage:	Store at -20°C as received.
Stability:	Stable for 12 months from date of receipt.
Predicted Protein Size:	34 kDa
Gene Name:	SCAN domain containing 2 pseudogene
Database Link:	<a href="#">NP_071333</a> <a href="#">Entrez Gene 54581 Human</a>
Background:	The SCAN domain is a highly conserved, leucine-rich motif of approximately 60 aa originally found within a subfamily of zinc finger proteins. Functional studies have established that the SCAN box is a protein interaction domain that mediates both hetero- and homoprotein associations, and maybe involved in regulation of transcriptional activity.
Synonyms:	SCAND2

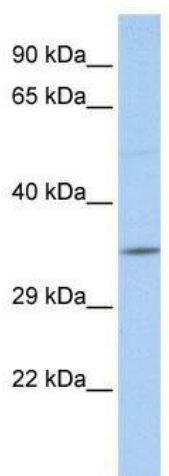


[View online »](#)

Note: Immunogen Sequence Homology: Human: 100%

Protein Families: Transcription Factors

### Product images:



WB Suggested Anti-SCAND2 Antibody Titration:  
0.2-1 ug/ml; ELISA Titer: 1:1562500; Positive  
Control: MCF7 cell lysate