

Product datasheet for **TA339538**

PXR (NR112) Rabbit Polyclonal Antibody

Product data:

Product Type:	Primary Antibodies
Applications:	WB
Recommended Dilution:	WB
Reactivity:	Human
Host:	Rabbit
Isotype:	IgG
Clonality:	Polyclonal
Immunogen:	The immunogen for anti-NR112 antibody: synthetic peptide directed towards the N terminal of human NR112. Synthetic peptide located within the following region: EVRPKESWNHADDFVHCEDTESVPGKPSVNADEEVGGPQICRVCGDKATGY
Formulation:	Liquid. Purified antibody supplied in 1x PBS buffer with 0.09% (w/v) sodium azide and 2% sucrose. <i>Note that this product is shipped as lyophilized powder to China customers.</i>
Concentration:	lot specific
Purification:	Protein A purified
Conjugation:	Unconjugated
Storage:	Store at -20°C as received.
Stability:	Stable for 12 months from date of receipt.
Predicted Protein Size:	50 kDa
Gene Name:	nuclear receptor subfamily 1 group I member 2
Database Link:	NP_003880 Entrez Gene 8856 Human O75469



[View online »](#)

Background:

This gene product belongs to the nuclear receptor superfamily, members of which are transcription factors characterized by a ligand-binding domain and a DNA-binding domain. The encoded protein is a transcriptional regulator of the cytochrome P450 gene CYP3A4, binding to the response element of the CYP3A4 promoter as a heterodimer with the 9-cis retinoic acid receptor RXR. It is activated by a range of compounds that induce CYP3A4, including dexamethasone and rifampicin. Several alternatively spliced transcripts encoding different isoforms, some of which use non-AUG (CUG) translation initiation codon, have been described for this gene. Additional transcript variants exist, however, they have not been fully characterized. [provided by RefSeq, Jul 2008]

Synonyms:

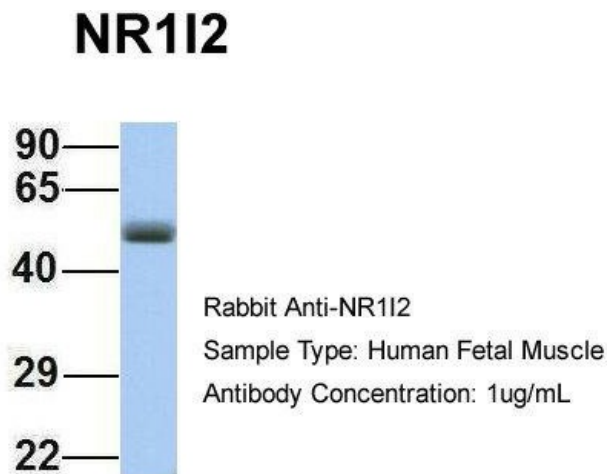
BXR; ONR1; PAR; PAR1; PAR2; PARq; PRR; PXR; SAR; SXR

Note:

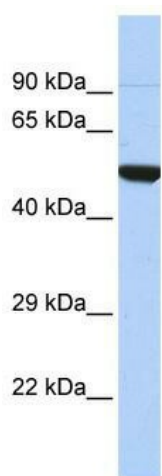
Immunogen Sequence Homology: Human: 100%

Protein Families:

Druggable Genome, Nuclear Hormone Receptor, Transcription Factors

Product images:

Host: Rabbit; Target Name: NR1I2; Sample Tissue: Human Fetal Muscle; Antibody Dilution: 1.0 ug/ml



WB Suggested Anti-NR1I2 Antibody Titration: 0.2-1 ug/ml; ELISA Titer: 1:62500; Positive Control: HepG2 cell lysate. NR1I2 is strongly supported by BioGPS gene expression data to be expressed in Human HepG2 cells