

## Product datasheet for **TA339533**

### WIZ Rabbit Polyclonal Antibody

#### Product data:

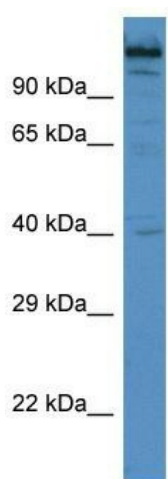
Product Type:	Primary Antibodies
Applications:	WB
Recommended Dilution:	WB
Reactivity:	Mouse
Host:	Rabbit
Isotype:	IgG
Clonality:	Polyclonal
Immunogen:	The immunogen for Anti-Wiz antibody is: synthetic peptide directed towards the C-terminal region of MOUSE Wiz. Synthetic peptide located within the following region: TSPPGTVKSEEHQEQNINKFERRQARPSDASAARGGEEVNDLQQKLEEV
Formulation:	Liquid. Purified antibody supplied in 1x PBS buffer with 0.09% (w/v) sodium azide and 2% sucrose. <i>Note that this product is shipped as lyophilized powder to China customers.</i>
Concentration:	lot specific
Purification:	Protein A purified
Conjugation:	Unconjugated
Storage:	Store at -20°C as received.
Stability:	Stable for 12 months from date of receipt.
Predicted Protein Size:	105 kDa
Gene Name:	widely interspaced zinc finger motifs
Database Link:	<a href="#">NP_067064</a> <a href="#">Entrez Gene 22404 Mouse</a> <a href="#">O95785</a>
Background:	Wiz may link EHMT1 and EHMT2 histone methyltransferases to the CTBP corepressor machinery. It may be involved in EHMT1-EHMT2 heterodimer formation and stabilization.
Synonyms:	ZNF803



[View online »](#)

**Note:** Immunogen Sequence Homology: Dog: 100%; Pig: 100%; Rat: 100%; Horse: 100%; Human: 100%; Bovine: 100%; Mouse: 93%; Rabbit: 86%

### Product images:



Host: Rabbit

Target Name: Wiz

Sample Tissue: Mouse Spleen Lysate

Antibody Dilution: 1.0 $\mu$ g/ml

Host: Rabbit; Target Name: Wiz; Sample Tissue: Mouse Spleen lysates; Antibody Dilution: 1.0 ug/ml