

Product datasheet for **TA339529**

HES4 Rabbit Polyclonal Antibody

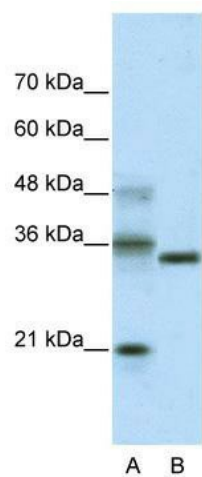
Product data:

Product Type:	Primary Antibodies
Applications:	WB
Recommended Dilution:	WB
Reactivity:	Human
Host:	Rabbit
Isotype:	IgG
Clonality:	Polyclonal
Immunogen:	The immunogen for anti-HES4 antibody: synthetic peptide directed towards the middle region of human HES4. Synthetic peptide located within the following region: GHLAACLRQLGPSRRPASLSPAAPAEAPAPEVYAGRPLLPSLGGPFPLLA
Formulation:	Liquid. Purified antibody supplied in 1x PBS buffer with 0.09% (w/v) sodium azide and 2% sucrose. <i>Note that this product is shipped as lyophilized powder to China customers.</i>
Concentration:	lot specific
Purification:	Protein A purified
Conjugation:	Unconjugated
Storage:	Store at -20°C as received.
Stability:	Stable for 12 months from date of receipt.
Predicted Protein Size:	24 kDa
Gene Name:	hes family bHLH transcription factor 4
Database Link:	NP_066993 Entrez Gene 57801 Human Q9HCC6
Background:	Transcriptional repressor. Binds DNA on N-box motifs: 5'-CACNAG-3'.
Synonyms:	bHLHb42
Note:	Immunogen Sequence Homology: Human: 100%; Bovine: 91%
Protein Families:	Druggable Genome, Transcription Factors



[View online »](#)

Product images:



WB Suggested Anti-HES4 Antibody Titration: 5.0 ug/ml; ELISA Titer: 1:312500; Positive Control: Transfected 293T