

## Product datasheet for **TA339528**

### HES4 Rabbit Polyclonal Antibody

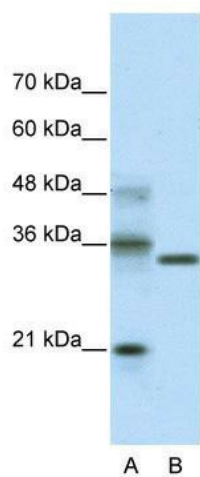
#### Product data:

Product Type:	Primary Antibodies
Applications:	WB
Recommended Dilution:	WB
Reactivity:	Human
Host:	Rabbit
Isotype:	IgG
Clonality:	Polyclonal
Immunogen:	The immunogen for anti-HES4 antibody: synthetic peptide directed towards the N terminal of human HES4. Synthetic peptide located within the following region: MAADTPGKPSASPMAGAPASASRTPDKPRSAAEHRKSSKPVMEKRRRARI
Formulation:	Liquid. Purified antibody supplied in 1x PBS buffer with 0.09% (w/v) sodium azide and 2% sucrose.
Concentration:	lot specific
Purification:	Protein A purified
Conjugation:	Unconjugated
Storage:	Store at -20°C as received.
Stability:	Stable for 12 months from date of receipt.
Predicted Protein Size:	24 kDa
Gene Name:	hes family bHLH transcription factor 4
Database Link:	<a href="#">NP_066993</a> <a href="#">Entrez Gene 57801 Human</a> <a href="#">Q9HCC6</a>
Background:	Transcriptional repressor. Binds DNA on N-box motifs: 5'-CACNAG-3'.
Synonyms:	bHLHb42
Note:	Immunogen Sequence Homology: Human: 100%; Dog: 93%; Bovine: 86%; Pig: 85%; Rat: 77%
Protein Families:	Druggable Genome, Transcription Factors



[View online »](#)

## Product images:



WB Suggested Anti-HES4 Antibody Titration: 2.0 ug/ml; ELISA Titer: 1:312500; Positive Control: Transfected 293T