

Product datasheet for **TA339527**

ZNF2 Rabbit Polyclonal Antibody

Product data:

Product Type:	Primary Antibodies
Applications:	WB
Recommended Dilution:	WB
Reactivity:	Human
Host:	Rabbit
Isotype:	IgG
Clonality:	Polyclonal
Immunogen:	The immunogen for anti-ZNF2 antibody: synthetic peptide directed towards the N terminal of human ZNF2. Synthetic peptide located within the following region: KFEVHTPNGRMGTEKQSPSGETRKKSLSRDKGLRRRSALSREILTKERHQ
Formulation:	Liquid. Purified antibody supplied in 1x PBS buffer with 0.09% (w/v) sodium azide and 2% sucrose. <i>Note that this product is shipped as lyophilized powder to China customers.</i>
Concentration:	lot specific
Purification:	Protein A purified
Conjugation:	Unconjugated
Storage:	Store at -20°C as received.
Stability:	Stable for 12 months from date of receipt.
Predicted Protein Size:	33 kDa
Gene Name:	zinc finger protein 2
Database Link:	NP_066574 Entrez Gene 7549 Human Q9BSG1
Background:	The protein encoded by this gene belongs to the C2H2-type zinc-finger protein family. The exact function of this gene is not known, however, zinc-finger proteins are known to interact with DNA and function as transcription regulators. Alternatively spliced transcript variants encoding different isoforms have been found for this gene. [provided by RefSeq, Apr 2014]
Synonyms:	A1-5; Zfp661; ZNF661

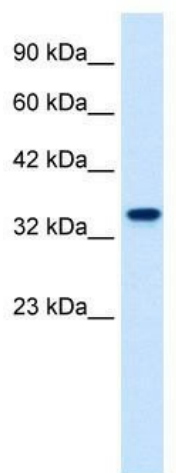


[View online »](#)

Note: Immunogen Sequence Homology: Human: 100%

Protein Families: Transcription Factors

Product images:



WB Suggested Anti-ZNF2 Antibody Titration: 1.25 ug/ml; ELISA Titer: 1:312500; Positive Control: HepG2 cell lysate