

Product datasheet for **TA339525**

ZNF248 Rabbit Polyclonal Antibody

Product data:

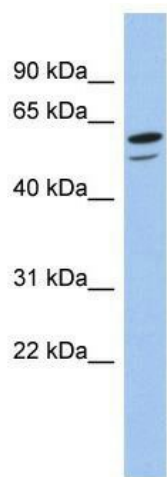
Product Type:	Primary Antibodies
Applications:	WB
Recommended Dilution:	WB
Reactivity:	Human
Host:	Rabbit
Isotype:	IgG
Clonality:	Polyclonal
Immunogen:	The immunogen for anti-ZNF248 antibody: synthetic peptide directed towards the N terminal of human ZNF248. Synthetic peptide located within the following region: CEMNLKNISGLIISKKNCSRKKPDEFNVCEKLLLDIRHEKIPIGEKSYKY
Formulation:	Liquid. Purified antibody supplied in 1x PBS buffer with 0.09% (w/v) sodium azide and 2% sucrose. <i>Note that this product is shipped as lyophilized powder to China customers.</i>
Concentration:	lot specific
Purification:	Protein A purified
Conjugation:	Unconjugated
Storage:	Store at -20°C as received.
Stability:	Stable for 12 months from date of receipt.
Predicted Protein Size:	67 kDa
Gene Name:	zinc finger protein 248
Database Link:	NP_066383 Entrez Gene 57209 Human Q8NDW4
Background:	May be involved in transcriptional regulation.
Synonyms:	bA162G10.3
Note:	Immunogen Sequence Homology: Human: 100%; Dog: 83%; Pig: 83%; Rat: 83%; Horse: 83%; Mouse: 83%; Bovine: 83%; Rabbit: 83%; Zebrafish: 77%



[View online »](#)

Protein Families: Transcription Factors

Product images:



WB Suggested Anti-ZNF248 Antibody Titration:
0.2-1 ug/ml; ELISA Titer: 1:312500; Positive
Control: COLO205 cell lysate