

## Product datasheet for TA339520

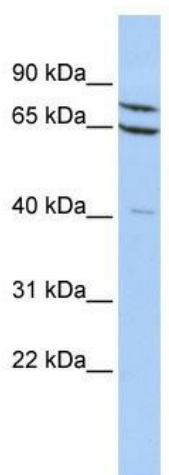
### ZNF471 Rabbit Polyclonal Antibody

#### Product data:

Product Type:	Primary Antibodies
Applications:	WB
Recommended Dilution:	WB
Reactivity:	Human
Host:	Rabbit
Isotype:	IgG
Clonality:	Polyclonal
Immunogen:	The immunogen for anti-ZNF471 antibody: synthetic peptide directed towards the N terminal of human ZNF471. Synthetic peptide located within the following region: KEIITHKETITKETEFKYTKFGKCIHLENIEESIYNHTSDKKSFSKNSMV
Formulation:	Liquid. Purified antibody supplied in 1x PBS buffer with 0.09% (w/v) sodium azide and 2% sucrose. <i>Note that this product is shipped as lyophilized powder to China customers.</i>
Concentration:	lot specific
Purification:	Protein A purified
Conjugation:	Unconjugated
Storage:	Store at -20°C as received.
Stability:	Stable for 12 months from date of receipt.
Predicted Protein Size:	73 kDa
Gene Name:	zinc finger protein 471
Database Link:	<a href="#">NP_065864</a> <a href="#">Entrez Gene 57573 Human Q9BX82</a>
Background:	May be involved in transcriptional regulation.
Synonyms:	ERP1; Z1971
Note:	Immunogen Sequence Homology: Human: 100%; Pig: 77%; Horse: 77%; Mouse: 77%
Protein Families:	Transcription Factors



[View online »](#)

**Product images:**

WB Suggested Anti-ZNF471 Antibody Titration:  
0.2-1 ug/ml; ELISA Titer: 1:62500; Positive Control:  
HepG2 cell lysate