

Product datasheet for **TA339517**

ZNF286 (ZNF286A) Rabbit Polyclonal Antibody

Product data:

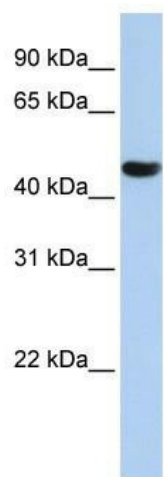
Product Type:	Primary Antibodies
Applications:	WB
Recommended Dilution:	WB
Reactivity:	Human
Host:	Rabbit
Isotype:	IgG
Clonality:	Polyclonal
Immunogen:	The immunogen for anti-ZNF286A antibody: synthetic peptide directed towards the N terminal of human ZNF286A. Synthetic peptide located within the following region: SSYSDMETRPQSKDSTSVQDFSKAESCKVAIIDRLTRNSVYDSNLEAALE
Formulation:	Liquid. Purified antibody supplied in 1x PBS buffer with 0.09% (w/v) sodium azide and 2% sucrose. <i>Note that this product is shipped as lyophilized powder to China customers.</i>
Concentration:	lot specific
Purification:	Protein A purified
Conjugation:	Unconjugated
Storage:	Store at -20°C as received.
Stability:	Stable for 12 months from date of receipt.
Predicted Protein Size:	60 kDa
Gene Name:	zinc finger protein 286A
Database Link:	NP_065703 Entrez Gene 57335 Human Q9HBT8
Background:	May be involved in transcriptional regulation.
Synonyms:	ZNF286
Note:	Immunogen Sequence Homology: Human: 100%; Pig: 93%; Rat: 93%; Horse: 86%; Bovine: 86%; Rabbit: 86%; Mouse: 79%; Guinea pig: 79%



[View online »](#)

Protein Families: Transcription Factors

Product images:



WB Suggested Anti-ZNF286A Antibody Titration:
0.2-1 ug/ml; ELISA Titer: 1:312500; Positive
Control: HepG2 cell lysate