

Product datasheet for **TA339513**

LHX9 Rabbit Polyclonal Antibody

Product data:

Product Type:	Primary Antibodies
Applications:	IHC, WB
Recommended Dilution:	WB, IHC
Reactivity:	Human
Host:	Rabbit
Isotype:	IgG
Clonality:	Polyclonal
Immunogen:	The immunogen for anti-LHX9 antibody: synthetic peptide directed towards the C terminal of human LHX9. Synthetic peptide located within the following region: RNLLRQENGGVDKADGTSLPAPPSADSGALTPPGTATTLTDLNPTITVV
Formulation:	Liquid. Purified antibody supplied in 1x PBS buffer with 0.09% (w/v) sodium azide and 2% sucrose. <i>Note that this product is shipped as lyophilized powder to China customers.</i>
Concentration:	lot specific
Purification:	Protein A purified
Conjugation:	Unconjugated
Storage:	Store at -20°C as received.
Stability:	Stable for 12 months from date of receipt.
Predicted Protein Size:	44 kDa
Gene Name:	LIM homeobox 9
Database Link:	NP_064589 Entrez Gene 56956 Human Q9NQ69



[View online »](#)

Background:

This gene encodes a member of the LIM homeobox gene family of developmentally expressed transcription factors. The encoded protein contains a homeodomain and two cysteine-rich zinc-binding LIM domains involved in protein-protein interactions. The protein is highly similar to a mouse protein that causes gonadal agenesis when inactivated, suggesting a role in gonadal development. Alternative splicing results in multiple transcript variants. [provided by RefSeq, Jul 2008]

Synonyms:

LIM homeobox 9; OTTHUMP00000033675; OTTHUMP00000033678

Note:

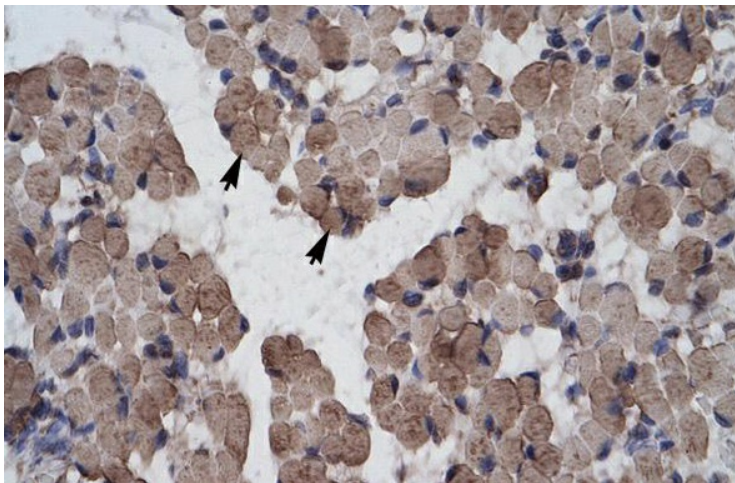
Immunogen Sequence Homology: Dog: 100%; Pig: 100%; Rat: 100%; Horse: 100%; Human: 100%; Mouse: 100%; Bovine: 100%; Zebrafish: 100%; Rabbit: 93%; Guinea pig: 93%

Protein Families:

Druggable Genome, Transcription Factors

Product images:

WB Suggested Anti-LHX9 Antibody Titration: 1.25 ug/ml; ELISA Titer: 1:312500; Positive Control: Jurkat cell lysate



Human Muscle