

Product datasheet for **TA339509**

ZNF331 Rabbit Polyclonal Antibody

Product data:

Product Type:	Primary Antibodies
Applications:	WB
Recommended Dilution:	WB
Reactivity:	Human
Host:	Rabbit
Isotype:	IgG
Clonality:	Polyclonal
Immunogen:	The immunogen for anti-ZNF331 antibody: synthetic peptide directed towards the N terminal of human ZNF331. Synthetic peptide located within the following region: YENKSLPTEKNIHEIRASKRNSDRRSKSLGRNWICEGTLERPQRSRGRYV
Formulation:	Liquid. Purified antibody supplied in 1x PBS buffer with 0.09% (w/v) sodium azide and 2% sucrose. <i>Note that this product is shipped as lyophilized powder to China customers.</i>
Concentration:	lot specific
Purification:	Protein A purified
Conjugation:	Unconjugated
Storage:	Store at -20°C as received.
Stability:	Stable for 12 months from date of receipt.
Predicted Protein Size:	54 kDa
Gene Name:	zinc finger protein 331
Database Link:	NP_061025 Entrez Gene 55422 Human Q9NQX6
Background:	This gene encodes a zinc finger protein containing a KRAB (Kruppel-associated box) domain found in transcriptional repressors. A pseudogene of this gene is located on chromosome 17. Multiple alternatively spliced variants, encoding the same protein, have been identified. [provided by RefSeq, Dec 2011]
Synonyms:	RITA; ZNF361; ZNF463

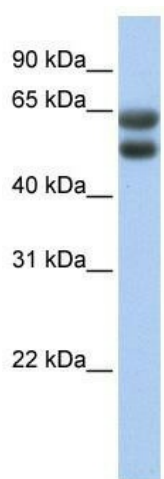


[View online »](#)

Note: Immunogen Sequence Homology: Human: 93%

Protein Families: Transcription Factors

Product images:



WB Suggested Anti-ZNF331 Antibody Titration:
0.2-1 ug/ml; ELISA Titer: 1:312500; Positive
Control: Human Lung