

## Product datasheet for **TA339505**

### ANKZF1 Rabbit Polyclonal Antibody

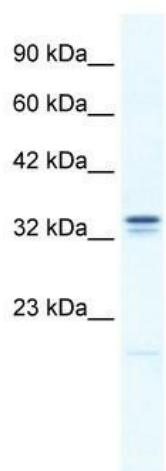
#### Product data:

Product Type:	Primary Antibodies
Applications:	WB
Recommended Dilution:	WB
Reactivity:	Human
Host:	Rabbit
Isotype:	IgG
Clonality:	Polyclonal
Immunogen:	The immunogen for anti-ANKZF1 antibody: synthetic peptide directed towards the N terminal of human ANKZF1. Synthetic peptide located within the following region: DKPLLSALDFEKQSSTGDLSSISGSEDSASSEEDLQTLDRERATFEKLS
Formulation:	Liquid. Purified antibody supplied in 1x PBS buffer with 0.09% (w/v) sodium azide and 2% sucrose. <i>Note that this product is shipped as lyophilized powder to China customers.</i>
Concentration:	lot specific
Purification:	Protein A purified
Conjugation:	Unconjugated
Storage:	Store at -20°C as received.
Stability:	Stable for 12 months from date of receipt.
Predicted Protein Size:	37 kDa
Gene Name:	ankyrin repeat and zinc finger domain containing 1
Database Link:	<a href="#">NP_060559</a> <a href="#">Entrez Gene 55139 Human Q9H8Y5</a>
Background:	Involved in the endoplasmic reticulum (ER)-associated degradation (ERAD) pathway.
Synonyms:	ZNF744
Note:	Immunogen Sequence Homology: Pig: 100%; Human: 100%; Rat: 93%; Horse: 93%; Dog: 92%; Rabbit: 92%; Bovine: 86%; Guinea pig: 86%



[View online »](#)

## Product images:



WB Suggested Anti-ANKZF1 Antibody Titration:  
0.2-1 ug/ml; ELISA Titer: 1:312500; Positive  
Control: HepG2 cell lysate