

Product datasheet for **TA339504**

ANKZF1 Rabbit Polyclonal Antibody

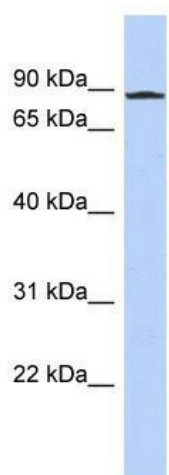
Product data:

Product Type:	Primary Antibodies
Applications:	WB
Recommended Dilution:	WB
Reactivity:	Human
Host:	Rabbit
Isotype:	IgG
Clonality:	Polyclonal
Immunogen:	The immunogen for anti-ANKZF1 antibody: synthetic peptide directed towards the N terminal of human ANKZF1. Synthetic peptide located within the following region: KPLLSALDFEKQSSTGDLSSISGSESDSASEEDLQTLDRERATFEKLSR
Formulation:	Liquid. Purified antibody supplied in 1x PBS buffer with 0.09% (w/v) sodium azide and 2% sucrose. <i>Note that this product is shipped as lyophilized powder to China customers.</i>
Concentration:	lot specific
Purification:	Protein A purified
Conjugation:	Unconjugated
Storage:	Store at -20°C as received.
Stability:	Stable for 12 months from date of receipt.
Predicted Protein Size:	81 kDa
Gene Name:	ankyrin repeat and zinc finger domain containing 1
Database Link:	NP_060559 Entrez Gene 55139 Human Q9H8Y5
Background:	Involved in the endoplasmic reticulum (ER)-associated degradation (ERAD) pathway.
Synonyms:	ZNF744
Note:	Immunogen Sequence Homology: Pig: 100%; Rat: 100%; Horse: 100%; Human: 100%; Bovine: 100%; Dog: 93%; Rabbit: 93%; Guinea pig: 93%; Mouse: 86%; Zebrafish: 79%



[View online »](#)

Product images:



WB Suggested Anti-ANKZF1 Antibody Titration:
0.2-1 ug/ml; ELISA Titer: 1:312500; Positive
Control: PANC1 cell lysate