

Product datasheet for **TA339503**

ZNF358 Rabbit Polyclonal Antibody

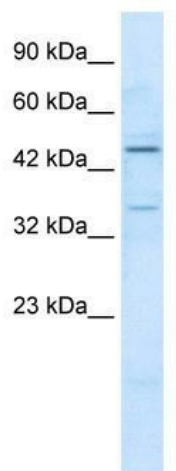
Product data:

Product Type:	Primary Antibodies
Applications:	IHC, WB
Recommended Dilution:	WB, IHC
Reactivity:	Human
Host:	Rabbit
Isotype:	IgG
Clonality:	Polyclonal
Immunogen:	The immunogen for anti-ZNF358 antibody: synthetic peptide directed towards the N terminal of human ZNF358. Synthetic peptide located within the following region: LILDPNSDTLSPGDPKVDPISSGLTATPQVLATSPA VLPAPASPPRPFSC
Formulation:	Liquid. Purified antibody supplied in 1x PBS buffer with 0.09% (w/v) sodium azide and 2% sucrose.
Concentration:	lot specific
Purification:	Protein A purified
Conjugation:	Unconjugated
Storage:	Store at -20°C as received.
Stability:	Stable for 12 months from date of receipt.
Predicted Protein Size:	50 kDa
Gene Name:	zinc finger protein 358
Database Link:	NP_060553 Entrez Gene 140467 Human Q9NW07
Background:	May be involved in transcriptional regulation.
Synonyms:	ZFEND
Note:	Immunogen Sequence Homology: Human: 100%

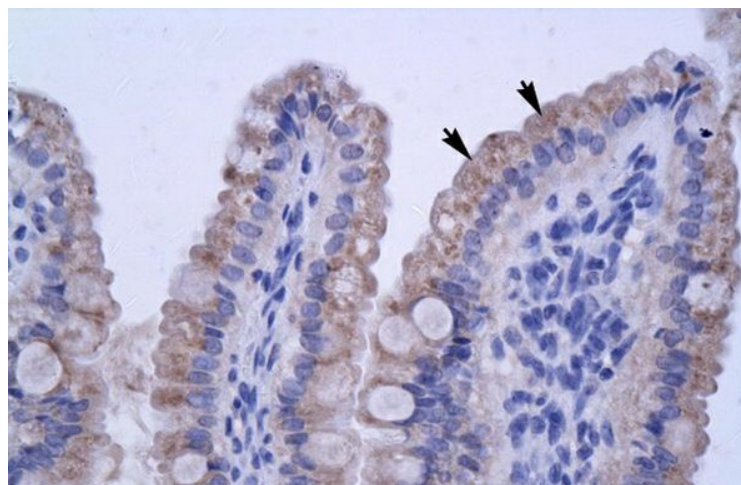


[View online »](#)

Product images:



WB Suggested Anti-ZNF358 Antibody Titration:
1.25 ug/ml; ELISA Titer: 1:312500; Positive
Control: Jurkat cell lysate



Human Intestine