

Product datasheet for **TA339500**

ZNF416 Rabbit Polyclonal Antibody

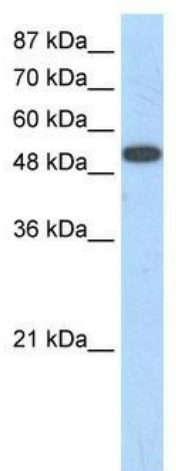
Product data:

Product Type:	Primary Antibodies
Applications:	WB
Recommended Dilution:	WB
Reactivity:	Human
Host:	Rabbit
Isotype:	IgG
Clonality:	Polyclonal
Immunogen:	The immunogen for anti-ZNF416 antibody: synthetic peptide directed towards the N terminal of human ZNF416. Synthetic peptide located within the following region: QVRTPEASPSTQKIQSCDMCVPFLTDILHLTDLPGQELYLTGACAVFHQD
Formulation:	Liquid. Purified antibody supplied in 1x PBS buffer with 0.09% (w/v) sodium azide and 2% sucrose. <i>Note that this product is shipped as lyophilized powder to China customers.</i>
Concentration:	lot specific
Purification:	Protein A purified
Conjugation:	Unconjugated
Storage:	Store at -20°C as received.
Stability:	Stable for 12 months from date of receipt.
Predicted Protein Size:	67 kDa
Gene Name:	zinc finger protein 416
Database Link:	NP_060349 Entrez Gene 55659 Human Q9BWM5
Background:	May be involved in transcriptional regulation.
Synonyms:	FLJ20557
Note:	Immunogen Sequence Homology: Human: 100%; Rabbit: 79%



[View online »](#)

Product images:



WB Suggested Anti-ZNF416 Antibody Titration:
1.25 ug/ml; ELISA Titer: 1:1562500; Positive
Control: 293T cell lysate