

Product datasheet for **TA339498**

ZNF280D Rabbit Polyclonal Antibody

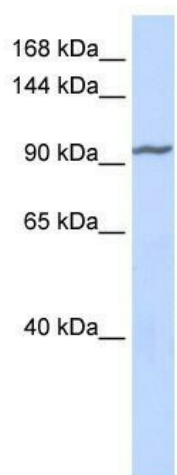
Product data:

Product Type:	Primary Antibodies
Applications:	WB
Recommended Dilution:	WB
Reactivity:	Human
Host:	Rabbit
Isotype:	IgG
Clonality:	Polyclonal
Immunogen:	The immunogen for anti-ZNF280D antibody: synthetic peptide directed towards the middle region of human ZNF280D. Synthetic peptide located within the following region: STLQLSPRRTKNITAKNPAKSNTSKPNTVKSNAKSKPNTSKPNGSKSKYKP
Formulation:	Liquid. Purified antibody supplied in 1x PBS buffer with 0.09% (w/v) sodium azide and 2% sucrose.
Concentration:	lot specific
Purification:	Protein A purified
Conjugation:	Unconjugated
Storage:	Store at -20°C as received.
Stability:	Stable for 12 months from date of receipt.
Predicted Protein Size:	109 kDa
Gene Name:	zinc finger protein 280D
Database Link:	NP_060131 Entrez Gene 54816 Human Q6N043
Background:	May function as a transcription factor.
Synonyms:	SUHW4; ZNF634
Note:	Immunogen Sequence Homology: Human: 100%; Dog: 93%; Pig: 93%; Horse: 86%; Rabbit: 86%; Bovine: 79%



[View online »](#)

Product images:



WB Suggested Anti-ZNF280D Antibody Titration:
0.2-1 ug/ml; ELISA Titer: 1:62500; Positive Control:
Human Muscle