

## Product datasheet for **TA339496**

### NKRF Rabbit Polyclonal Antibody

#### Product data:

Product Type:	Primary Antibodies
Applications:	WB
Recommended Dilution:	WB
Reactivity:	Human
Host:	Rabbit
Isotype:	IgG
Clonality:	Polyclonal
Immunogen:	The immunogen for anti-NKRF antibody: synthetic peptide directed towards the N terminal of human NKRF. Synthetic peptide located within the following region: HFVASSSKDERQEDPYGPQTKEVNEQTHFASMPRDIYQDYTQDSFSIQDG
Formulation:	Liquid. Purified antibody supplied in 1x PBS buffer with 0.09% (w/v) sodium azide and 2% sucrose. <i>Note that this product is shipped as lyophilized powder to China customers.</i>
Concentration:	lot specific
Purification:	Protein A purified
Conjugation:	Unconjugated
Storage:	Store at -20°C as received.
Stability:	Stable for 12 months from date of receipt.
Predicted Protein Size:	78 kDa
Gene Name:	NFKB repressing factor
Database Link:	<a href="#">NP_060014</a> <a href="#">Entrez Gene 55922 Human</a> <a href="#">O15226</a>
Background:	This gene encodes a transcriptional repressor that interacts with specific negative regulatory elements to mediate transcriptional repression of certain nuclear factor kappa B responsive genes. The protein localizes predominantly to the nucleolus with a small fraction found in the nucleoplasm and cytoplasm. Alternate splicing results in multiple transcript variants. [provided by RefSeq, Mar 2010]



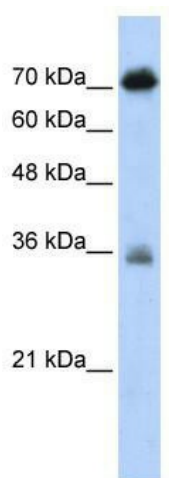
[View online »](#)

**Synonyms:** ITBA4; NRF

**Note:** Immunogen Sequence Homology: Human: 100%; Dog: 93%; Pig: 93%; Rat: 93%; Horse: 93%; Rabbit: 92%; Mouse: 86%; Bovine: 86%; Guinea pig: 86%

**Protein Families:** Transcription Factors

**Product images:**



WB Suggested Anti-NKRF Antibody Titration: 0.2-1 ug/ml; ELISA Titer: 1:62500; Positive Control: Transfected 293T