

Product datasheet for TA339492

SCAND1 Rabbit Polyclonal Antibody

Product data:

Product Type:	Primary Antibodies
Applications:	WB
Recommended Dilution:	WB
Reactivity:	Human
Host:	Rabbit
Isotype:	IgG
Clonality:	Polyclonal
Immunogen:	The immunogen for anti-SCAND1 antibody: synthetic peptide directed towards the middle region of human SCAND1. Synthetic peptide located within the following region: RAAASAALELPLGPAPVSVAPQAEAEARSTPGPAGSRLGPEFRQRFRQF
Formulation:	Liquid. Purified antibody supplied in 1x PBS buffer with 0.09% (w/v) sodium azide and 2% sucrose. <i>Note that this product is shipped as lyophilized powder to China customers.</i>
Concentration:	lot specific
Purification:	Protein A purified
Conjugation:	Unconjugated
Storage:	Store at -20°C as received.
Stability:	Stable for 12 months from date of receipt.
Predicted Protein Size:	19 kDa
Gene Name:	SCAN domain containing 1
Database Link:	NP_057642 Entrez Gene 51282 Human P57086



[View online »](#)

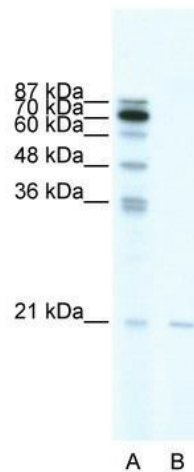
Background: This gene encodes a SCAN box domain-containing protein. The SCAN domain is a highly conserved, leucine-rich motif of approximately 60 aa originally found within a subfamily of zinc finger proteins. This gene belongs to a family of genes that encode an isolated SCAN domain, but no zinc finger motif. This protein binds to and may regulate the function of the transcription factor myeloid zinc finger 1B. Alternate splicing results in multiple transcript variants. [provided by RefSeq, Jan 2011]

Synonyms: RAZ1; SDP1

Note: Immunogen Sequence Homology: Human: 100%; Pig: 86%

Protein Families: Transcription Factors

Product images:



WB Suggested Anti-SCAND1 Antibody Titration: 0.2-1 ug/ml; ELISA Titer: 1:62500; Positive Control: HepG2 cell lysate SCAND1 is supported by BioGPS gene expression data to be expressed in HepG2