

Product datasheet for **TA339488**

PHF20 Rabbit Polyclonal Antibody

Product data:

Product Type:	Primary Antibodies
Applications:	WB
Recommended Dilution:	WB
Reactivity:	Human
Host:	Rabbit
Isotype:	IgG
Clonality:	Polyclonal
Immunogen:	The immunogen for anti-PHF20 antibody: synthetic peptide directed towards the C terminal of human PHF20. Synthetic peptide located within the following region: GSALDDAVNPLHENGDDSLSPRLGWPLDQDRSKGSDPKPGSPKVKEYVS
Formulation:	Liquid. Purified antibody supplied in 1x PBS buffer with 0.09% (w/v) sodium azide and 2% sucrose. <i>Note that this product is shipped as lyophilized powder to China customers.</i>
Concentration:	lot specific
Purification:	Protein A purified
Conjugation:	Unconjugated
Storage:	Store at -20°C as received.
Stability:	Stable for 12 months from date of receipt.
Predicted Protein Size:	83 kDa
Gene Name:	PHD finger protein 20
Database Link:	NP_057520 Entrez Gene 51230 Human Q9BVI0
Background:	PHF20 is a possible transcription factor.
Synonyms:	C20orf104; GLEA2; HCA58; NZF; TDRD20A; TZP
Note:	Immunogen Sequence Homology: Human: 100%; Pig: 92%; Bovine: 92%; Rabbit: 92%; Horse: 83%; Guinea pig: 83%



[View online »](#)

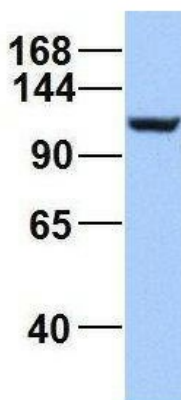
Protein Families: Druggable Genome, Transcription Factors

Product images:



WB Suggested Anti-PHF20 Antibody Titration: 0.2-1 ug/ml; ELISA Titer: 1:2500; Positive Control: Jurkat cell lysate

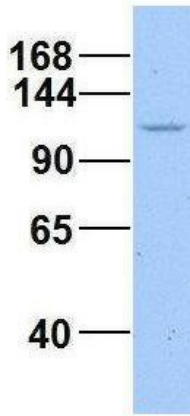
PHF20



Rabbit Anti-PHF20
 Sample Type: Human HeLa
 Antibody Concentration: 1ug/mL

2Human HeLa; Host: Rabbit; Target Name: EGFL8; Sample Tissue: HeLa; Antibody Dilution: 1.0 ug/ml; PHF20 is strongly supported by BioGPS gene expression data to be expressed in HeLa

PHF20



Rabbit Anti-PHF20
Sample Type: Human 721_B
Antibody Concentration: 1ug/mL

3Human 721_B; Host: Rabbit; Target Name: WT1;
Sample Tissue: 721_B; Antibody Dilution: 1.0
ug/ml; PHF20 is strongly supported by BioGPS
gene expression data to be expressed in Human
721_B cells