

Product datasheet for **TA339486**

VGLL1 Rabbit Polyclonal Antibody

Product data:

Product Type:	Primary Antibodies
Applications:	WB
Recommended Dilution:	WB
Reactivity:	Human
Host:	Rabbit
Isotype:	IgG
Clonality:	Polyclonal
Immunogen:	The immunogen for anti-VGLL1 antibody: synthetic peptide directed towards the N terminal of human VGLL1. Synthetic peptide located within the following region: LFTYFQGDISSVDEHFSRALSNIKSPQELTPSSQSEGVMKNDSDMSPN
Formulation:	Liquid. Purified antibody supplied in 1x PBS buffer with 0.09% (w/v) sodium azide and 2% sucrose. <i>Note that this product is shipped as lyophilized powder to China customers.</i>
Concentration:	lot specific
Purification:	Protein A purified
Conjugation:	Unconjugated
Storage:	Store at -20°C as received.
Stability:	Stable for 12 months from date of receipt.
Predicted Protein Size:	29 kDa
Gene Name:	vestigial like family member 1
Database Link:	NP_057351 Entrez Gene 51442 Human Q99990
Background:	The protein encoded by this gene binds proteins of the TEA domain family of transcription factors (TEFs) through the Vg (vestigial) homology region found in its N-terminus. It may thus function as a specific coactivator for the mammalian TEFs. [provided by RefSeq, Sep 2009]
Synonyms:	TDU; VGL1

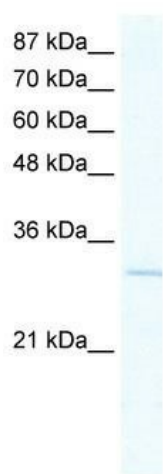


[View online »](#)

Note: Immunogen Sequence Homology: Human: 100%; Rat: 86%

Protein Families: Transcription Factors

Product images:



WB Suggested Anti-VGLL1 Antibody Titration: 2.5 ug/ml; ELISA Titer: 1:312500; Positive Control: Jurkat cell lysate