

Product datasheet for **TA339484**

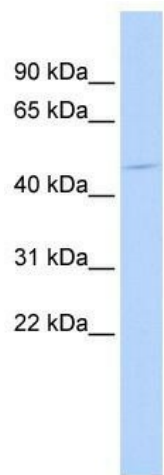
LW1 (HSFX1) Rabbit Polyclonal Antibody

Product data:

Product Type:	Primary Antibodies
Applications:	WB
Recommended Dilution:	WB
Reactivity:	Human
Host:	Rabbit
Isotype:	IgG
Clonality:	Polyclonal
Immunogen:	The immunogen for anti-HSFX1 antibody: synthetic peptide directed towards the middle region of human HSFX1. Synthetic peptide located within the following region: QVTPQHREPAGPNTQIRSGSAPPATPVMVPDSAVASDNSPVTQPAGWESE
Formulation:	Liquid. Purified antibody supplied in 1x PBS buffer with 0.09% (w/v) sodium azide and 2% sucrose.
Concentration:	lot specific
Purification:	Protein A purified
Conjugation:	Unconjugated
Storage:	Store at -20°C as received.
Stability:	Stable for 12 months from date of receipt.
Predicted Protein Size:	47 kDa
Gene Name:	heat shock transcription factor family, X-linked 1
Database Link:	NP_057237 Entrez Gene 100506164 Human Q9UBD0
Background:	The exact function of HSFX1 remains unknown.
Synonyms:	LW-1
Note:	Immunogen Sequence Homology: Human: 100%



[View online »](#)

Product images:

WB Suggested Anti-HSFX1 Antibody Titration: 0.2-1 ug/ml; ELISA Titer: 1:1562500; Positive Control: 721_B cell lysateHSFX1 is supported by BioGPS gene expression data to be expressed in 721_B