

Product datasheet for **TA339483**

LW1 (HSFX1) Rabbit Polyclonal Antibody

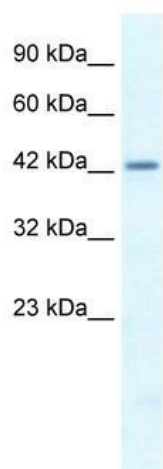
Product data:

Product Type:	Primary Antibodies
Applications:	IHC, WB
Recommended Dilution:	WB, IHC
Reactivity:	Human
Host:	Rabbit
Isotype:	IgG
Clonality:	Polyclonal
Immunogen:	The immunogen for anti-LW-1 antibody: synthetic peptide directed towards the middle region of human LW-1. Synthetic peptide located within the following region: DKPEAAGSCLAPADTEQQDHTSPNENDQVTPQHREPAGPNTQIRSGSAPP
Formulation:	Liquid. Purified antibody supplied in 1x PBS buffer with 0.09% (w/v) sodium azide and 2% sucrose. <i>Note that this product is shipped as lyophilized powder to China customers.</i>
Concentration:	lot specific
Purification:	Protein A purified
Conjugation:	Unconjugated
Storage:	Store at -20°C as received.
Stability:	Stable for 12 months from date of receipt.
Predicted Protein Size:	47 kDa
Gene Name:	heat shock transcription factor family, X-linked 1
Database Link:	NP_057237 Entrez Gene 100506164 Human Q9UBD0
Background:	Located on chromosome X, this gene encodes hypothetical protein LOC51402.
Synonyms:	LW-1
Note:	Immunogen Sequence Homology: Human: 100%

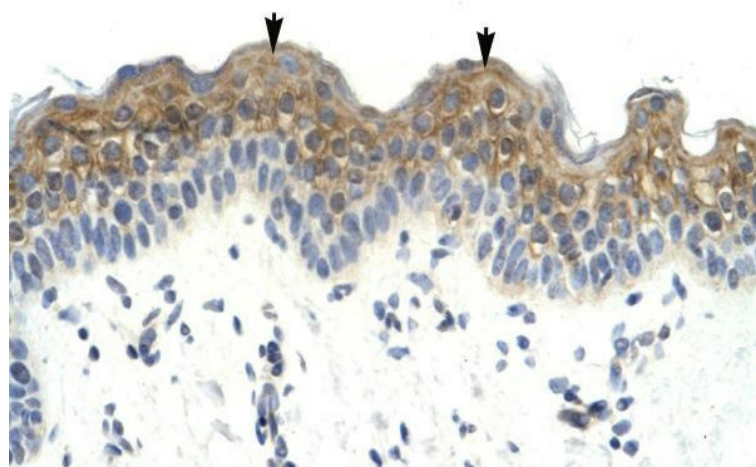


[View online »](#)

Product images:



WB Suggested Anti-LW-1 Antibody Titration: 0.2-1 ug/ml; ELISA Titer: 1:1562500; Positive Control: Jurkat cell lysate



Human Skin