

## Product datasheet for **TA339482**

### ETV7 Rabbit Polyclonal Antibody

#### Product data:

Product Type:	Primary Antibodies
Applications:	WB
Recommended Dilution:	WB
Reactivity:	Human
Host:	Rabbit
Isotype:	IgG
Clonality:	Polyclonal
Immunogen:	The immunogen for anti-ETV7 antibody: synthetic peptide directed towards the C terminal of human ETV7. Synthetic peptide located within the following region: IIKKEPGQKLLFRFLKTPGKMVQDKHSHLEPLESQEQDRIEFKDKRPEIS
Formulation:	Liquid. Purified antibody supplied in 1x PBS buffer with 0.09% (w/v) sodium azide and 2% sucrose. <i>Note that this product is shipped as lyophilized powder to China customers.</i>
Concentration:	lot specific
Purification:	Protein A purified
Conjugation:	Unconjugated
Storage:	Store at -20°C as received.
Stability:	Stable for 12 months from date of receipt.
Predicted Protein Size:	39 kDa
Gene Name:	ETS variant 7
Database Link:	<a href="#">NP_057219</a> <a href="#">Entrez Gene 51513 Human</a> <a href="#">Q9Y603</a>



[View online »](#)

**Background:** The protein encoded by this gene belongs to the ETS family of transcription factors, which is a large group of evolutionarily conserved transcriptional regulators that play an important role in a variety of cellular processes throughout development and differentiation, and are involved in oncogenesis as well. This protein is predominantly expressed in hematopoietic tissues. Several alternatively spliced transcript variants encoding different isoforms have been described for this gene (PMID:11108721). [provided by RefSeq, May 2011]

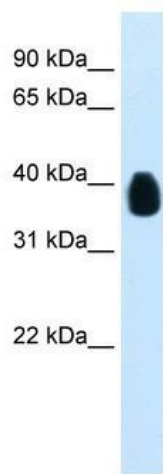
**Synonyms:** TEL-2; TEL2; TELB

**Note:** Immunogen Sequence Homology: Human: 100%; Dog: 82%; Horse: 79%

**Protein Families:** Druggable Genome, Transcription Factors

**Protein Pathways:** Dorso-ventral axis formation

### Product images:



WB Suggested Anti-ETV7 Antibody Titration:  
0.0625 ug/ml; ELISA Titer: 1:1562500; Positive  
Control: Transfected 293T