

Product datasheet for **TA339480**

Pokemon (ZBTB7A) Rabbit Polyclonal Antibody

Product data:

Product Type:	Primary Antibodies
Applications:	WB
Recommended Dilution:	WB
Reactivity:	Human
Host:	Rabbit
Isotype:	IgG
Clonality:	Polyclonal
Immunogen:	The immunogen for anti-ZBTB7A antibody: synthetic peptide directed towards the middle region of human ZBTB7A. Synthetic peptide located within the following region: PPAERPPTGDGDEGDSNPGLWPERDEDAPTGGLFPPPVAPPAATQNGHYG
Formulation:	Liquid. Purified antibody supplied in 1x PBS buffer with 0.09% (w/v) sodium azide and 2% sucrose. <i>Note that this product is shipped as lyophilized powder to China customers.</i>
Concentration:	lot specific
Purification:	Protein A purified
Conjugation:	Unconjugated
Storage:	Store at -20°C as received.
Stability:	Stable for 12 months from date of receipt.
Predicted Protein Size:	61 kDa
Gene Name:	zinc finger and BTB domain containing 7A
Database Link:	NP_056982 Entrez Gene 51341 Human O95365
Background:	Plays a key role in the instruction of early lymphoid progenitors to develop into B lineage by repressing T-cell instructive Notch signals (By similarity). Specifically represses the transcription of the CDKN2A gene. Efficiently abrogates E2F1-dependent CDKN2A transactivation/de-repression. Binds to the consensus sequence 5'-[GA][CA]GACCCCCCCC-3'.
Synonyms:	FBI-1; FBI1; LRF; pokemon; TIP21; ZBTB7; ZNF857A

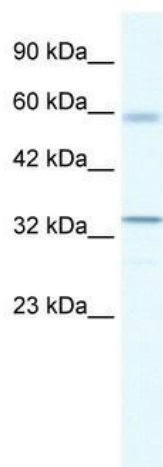


[View online »](#)

Note: Immunogen Sequence Homology: Human: 100%; Bovine: 93%; Pig: 86%; Rat: 85%; Mouse: 85%; Dog: 79%

Protein Families: Transcription Factors

Product images:



WB Suggested Anti-ZBTB7A Antibody Titration:
1.25 ug/ml; ELISA Titer: 1:12500; Positive Control:
HepG2 cell lysate