

Product datasheet for **TA339477**

MLX interacting protein (MLXIP) Rabbit Polyclonal Antibody

Product data:

Product Type:	Primary Antibodies
Applications:	WB
Recommended Dilution:	WB
Reactivity:	Human
Host:	Rabbit
Isotype:	IgG
Clonality:	Polyclonal
Immunogen:	The immunogen for anti-MLXIP antibody: synthetic peptide directed towards the C terminal of human MLXIP. Synthetic peptide located within the following region: ALSWLDQHCSLPILRPMVLSTLRQLSTSTSILTDP AQLPEQASKAVTRIG
Formulation:	Liquid. Purified antibody supplied in 1x PBS buffer with 0.09% (w/v) sodium azide and 2% sucrose.
Concentration:	lot specific
Purification:	Protein A purified
Conjugation:	Unconjugated
Storage:	Store at -20°C as received.
Stability:	Stable for 12 months from date of receipt.
Predicted Protein Size:	101 kDa
Gene Name:	MLX interacting protein
Database Link:	NP_055753 Entrez Gene 22877 Human Q9HAP2
Background:	This gene encodes a protein that functions as part of a heterodimer to activate transcription. The encoded protein forms a heterodimer with Max-like protein X (MLX) and is involved in the regulation of genes in response to cellular glucose levels. [provided by RefSeq, Mar 2014]
Synonyms:	bHLHe36; MIR; MONDOA

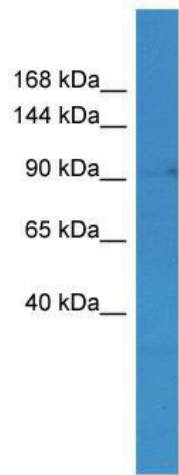


[View online »](#)

Note: Immunogen Sequence Homology: Human: 100%; Pig: 86%; Rat: 86%; Mouse: 86%; Guinea pig: 86%; Dog: 79%; Horse: 79%; Bovine: 77%

Protein Families: Transcription Factors

Product images:



WB Suggested Anti-MLXIP Antibody Titration: 0.2-1 ug/ml; ELISA Titer: 1:62500; Positive Control: Jurkat cell lysate MLXIP is strongly supported by BioGPS gene expression data to be expressed in Human Jurkat cells