

Product datasheet for **TA339470**

VSX1 Rabbit Polyclonal Antibody

Product data:

Product Type:	Primary Antibodies
Applications:	WB
Recommended Dilution:	WB
Reactivity:	Human
Host:	Rabbit
Isotype:	IgG
Clonality:	Polyclonal
Immunogen:	The immunogen for anti-VSX1 antibody: synthetic peptide directed towards the middle region of human VSX1. Synthetic peptide located within the following region: LAGLWGSDFHKEGSSQSESGSQRGSDKVSPENGLDVAIDLSSARQETK
Formulation:	Liquid. Purified antibody supplied in 1x PBS buffer with 0.09% (w/v) sodium azide and 2% sucrose. <i>Note that this product is shipped as lyophilized powder to China customers.</i>
Concentration:	lot specific
Purification:	Protein A purified
Conjugation:	Unconjugated
Storage:	Store at -20°C as received.
Stability:	Stable for 12 months from date of receipt.
Predicted Protein Size:	38 kDa
Gene Name:	visual system homeobox 1
Database Link:	NP_055403 Entrez Gene 30813 Human Q9NZR4



[View online »](#)

Background:

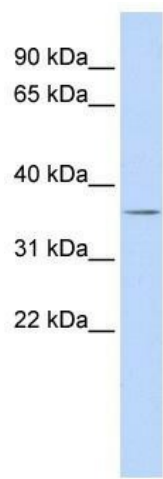
The protein encoded by this gene contains a paired-like homeodomain and binds to the core of the locus control region of the red/green visual pigment gene cluster. The encoded protein may regulate expression of the cone opsin genes early in development. Mutations in this gene can cause posterior polymorphous corneal dystrophy and keratoconus. Alternatively spliced transcript variants encoding different isoforms have been described. [provided by RefSeq, Jul 2008]

Synonyms:

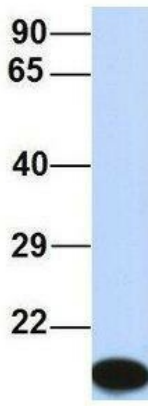
CAASDS; KTCN; KTCN1; PPCD; PPCD1; PPD; RINX

Note:

Immunogen Sequence Homology: Human: 100%

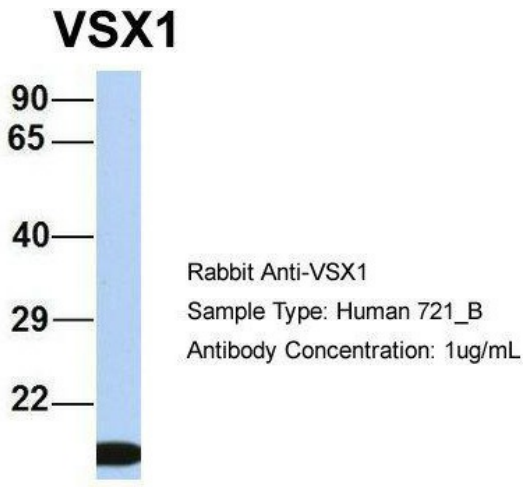
Product images:


WB Suggested Anti-VSX1 Antibody Titration: 0.2-1 ug/ml; ELISA Titer: 1:62500; Positive Control: Human Liver

VSX1


Rabbit Anti-VSX1
Sample Type: Human 293T
Antibody Concentration: 1ug/mL

Host: Rabbit; Target Name: VSX1; Sample Tissue: Human 293T; Antibody Dilution: 1.0 ug/ml



Host: Rabbit; Target Name: VSX1; Sample Tissue: Human 721_B; Antibody Dilution: 1.0 ug/ml; VSX1 is supported by BioGPS gene expression data to be expressed in 721_B