

## Product datasheet for **TA339467**

### VENTX Rabbit Polyclonal Antibody

#### Product data:

Product Type:	Primary Antibodies
Applications:	WB
Recommended Dilution:	WB
Reactivity:	Human
Host:	Rabbit
Isotype:	IgG
Clonality:	Polyclonal
Immunogen:	The immunogen for anti-VENTX antibody: synthetic peptide directed towards the middle region of human VENTX. Synthetic peptide located within the following region: VAQEALASAGASCCGQLASHPPTPGRPSLGPALSTGPRGLCAMPQTGDA
Formulation:	Liquid. Purified antibody supplied in 1x PBS buffer with 0.09% (w/v) sodium azide and 2% sucrose. <i>Note that this product is shipped as lyophilized powder to China customers.</i>
Concentration:	lot specific
Purification:	Protein A purified
Conjugation:	Unconjugated
Storage:	Store at -20°C as received.
Stability:	Stable for 12 months from date of receipt.
Predicted Protein Size:	27 kDa
Gene Name:	VENT homeobox
Database Link:	<a href="#">NP_055283</a> <a href="#">Entrez Gene 27287 Human</a> <a href="#">O95231</a>
Background:	This gene encodes a member of the Vent family of homeodomain proteins. The encoded protein may function as a transcriptional repressor and be involved in mesodermal patterning and hemopoietic stem cell maintenance. Multiple pseudogenes exist for this gene. A transcribed pseudogene located on chromosome X may lead to antigen production in certain melanomas. [provided by RefSeq, Jul 2008]



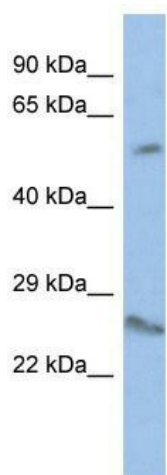
[View online »](#)

**Synonyms:** HPX42B; NA88A; VENTX2

**Note:** Immunogen Sequence Homology: Human: 100%

**Protein Families:** Transcription Factors

**Product images:**



WB Suggested Anti-VENTX Antibody Titration: 0.2-1 ug/ml; ELISA Titer: 1:312500; Positive Control: HT1080 cell lysate