

Product datasheet for **TA339465**

BTBD15 (ZBTB44) Rabbit Polyclonal Antibody

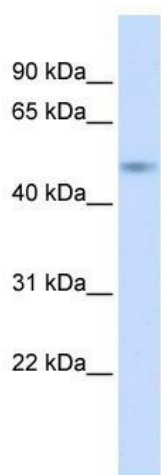
Product data:

| | |
|-------------------------|--|
| Product Type: | Primary Antibodies |
| Applications: | WB |
| Recommended Dilution: | WB |
| Reactivity: | Human |
| Host: | Rabbit |
| Isotype: | IgG |
| Clonality: | Polyclonal |
| Immunogen: | The immunogen for anti-ZBTB44 antibody: synthetic peptide directed towards the middle region of human ZBTB44. Synthetic peptide located within the following region: SRRKRKSYIVMSPESPVKCGTQTSSPQVLNSSASYSERNQPVDSSLAFP |
| Formulation: | Liquid. Purified antibody supplied in 1x PBS buffer with 0.09% (w/v) sodium azide and 2% sucrose. |
| Concentration: | lot specific |
| Purification: | Protein A purified |
| Conjugation: | Unconjugated |
| Storage: | Store at -20°C as received. |
| Stability: | Stable for 12 months from date of receipt. |
| Predicted Protein Size: | 50 kDa |
| Gene Name: | zinc finger and BTB domain containing 44 |
| Database Link: | NP_054874 Entrez Gene 29068 Human Q8NCP5 |
| Background: | May be involved in transcriptional regulation. |
| Synonyms: | BTBD15; HSPC063; ZNF851 |
| Note: | Immunogen Sequence Homology: Dog: 100%; Pig: 100%; Horse: 100%; Human: 100%; Mouse: 100%; Guinea pig: 100%; Rabbit: 93%; Rat: 92%; Bovine: 86% |



[View online »](#)

Product images:



WB Suggested Anti-ZBTB44 Antibody Titration:
0.2-1 ug/ml; ELISA Titer: 1:62500; Positive Control:
Hela cell lysate