

Product datasheet for **TA339460**

ZNF223 Rabbit Polyclonal Antibody

Product data:

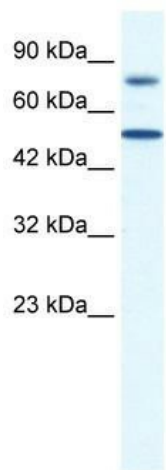
| | |
|-------------------------|---|
| Product Type: | Primary Antibodies |
| Applications: | IHC, WB |
| Recommended Dilution: | WB, IHC |
| Reactivity: | Human |
| Host: | Rabbit |
| Isotype: | IgG |
| Clonality: | Polyclonal |
| Immunogen: | The immunogen for anti-ZNF223 antibody: synthetic peptide directed towards the N terminal of human ZNF223. Synthetic peptide located within the following region: HEGWSCQQIWEEIASDLTRPQDSTIKSSQFFEQGDHSAHSQVEEGISIMHTG |
| Formulation: | Liquid. Purified antibody supplied in 1x PBS buffer with 0.09% (w/v) sodium azide and 2% sucrose. |
| Concentration: | lot specific |
| Purification: | Protein A purified |
| Conjugation: | Unconjugated |
| Storage: | Store at -20°C as received. |
| Stability: | Stable for 12 months from date of receipt. |
| Predicted Protein Size: | 56 kDa |
| Gene Name: | zinc finger protein 223 |
| Database Link: | NP_037493 Entrez Gene 7766 Human Q9UK11 |
| Background: | This gene encodes a protein containing a Kruppel-associated box domain and multiple zinc finger domains. The function of this protein has yet to be determined. [provided by RefSeq, Mar 2014] |
| Synonyms: | Homo sapiens zinc finger protein 223; KRAB A domain; zinc finger protein 223; Zinc finger protein ZNF223 |


[View online »](#)

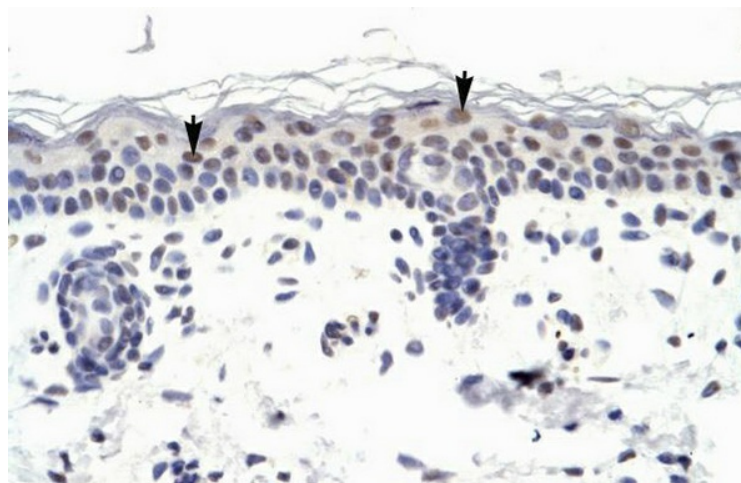
Note: Immunogen Sequence Homology: Human: 100%

Protein Families: Transcription Factors

Product images:



WB Suggested Anti-ZNF223 Antibody Titration:
0.2-1 ug/ml; ELISA Titer: 1:12500; Positive Control:
Jurkat cell lysate



Human Skin