

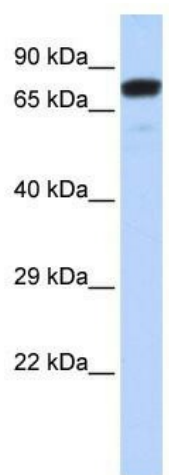
Product datasheet for **TA339458**

ZNF221 Rabbit Polyclonal Antibody

Product data:

| | |
|-------------------------|--|
| Product Type: | Primary Antibodies |
| Applications: | WB |
| Recommended Dilution: | WB |
| Reactivity: | Human |
| Host: | Rabbit |
| Isotype: | IgG |
| Clonality: | Polyclonal |
| Immunogen: | The immunogen for anti-ZNF221 antibody: synthetic peptide directed towards the N terminal of human ZNF221. Synthetic peptide located within the following region: METVPEAGPHEEWSCQIQIWEQIASDLTRSQNSIRNSSQFFKEGDVPCQIE |
| Formulation: | Liquid. Purified antibody supplied in 1x PBS buffer with 0.09% (w/v) sodium azide and 2% sucrose. |
| Concentration: | lot specific |
| Purification: | Protein A purified |
| Conjugation: | Unconjugated |
| Storage: | Store at -20°C as received. |
| Stability: | Stable for 12 months from date of receipt. |
| Predicted Protein Size: | 71 kDa |
| Gene Name: | zinc finger protein 221 |
| Database Link: | NP_037491 Entrez Gene 7638 Human Q9UK13 |
| Background: | May be involved in transcriptional regulation. |
| Synonyms: | MGC138186; MGC141986 |
| Note: | Immunogen Sequence Homology: Human: 100% |


[View online »](#)

Product images:


WB Suggested Anti-ZNF221 Antibody Titration:
 0.2-1 ug/ml; ELISA Titer: 1:312500; Positive
 Control: Hela cell lysate