

Product datasheet for **TA339454**

NUFIP1 Rabbit Polyclonal Antibody

Product data:

Product Type:	Primary Antibodies
Applications:	WB
Recommended Dilution:	WB
Reactivity:	Human
Host:	Rabbit
Isotype:	IgG
Clonality:	Polyclonal
Immunogen:	The immunogen for anti-NUFIP1 antibody: synthetic peptide directed towards the N terminal of human NUFIP1. Synthetic peptide located within the following region: GQPWNFHA ST SWYWRQSSDRFPRHQKSFNPAVKNSYPRKYDAKFTDFSL
Formulation:	Liquid. Purified antibody supplied in 1x PBS buffer with 0.09% (w/v) sodium azide and 2% sucrose. <i>Note that this product is shipped as lyophilized powder to China customers.</i>
Concentration:	lot specific
Purification:	Protein A purified
Conjugation:	Unconjugated
Storage:	Store at -20°C as received.
Stability:	Stable for 12 months from date of receipt.
Predicted Protein Size:	56 kDa
Gene Name:	NUFIP1, FMR1 interacting protein 1
Database Link:	NP_036477 Entrez Gene 26747 Human Q9UHK0



[View online »](#)

Background:

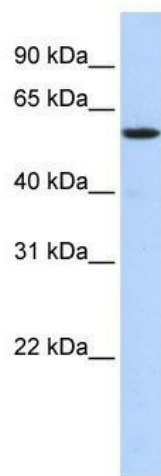
This gene encodes a nuclear RNA binding protein that contains a C2H2 zinc finger motif and a nuclear localization signal. This protein is associated with the nuclear matrix in perichromatin fibrils and, in neurons, localizes to the cytoplasm in association with endoplasmic reticulum ribosomes. This protein interacts with the fragile X mental retardation protein (FMRP), the tumor suppressor protein BRCA1, upregulates RNA polymerase II transcription, and is involved in box C/D snoRNP biogenesis. A pseudogene of this gene resides on chromosome 6q12. [provided by RefSeq, Feb 2012]

Synonyms:

bA540M5.1; NUFIP

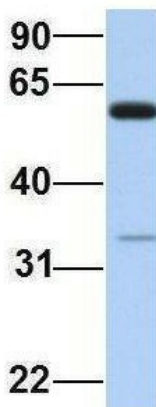
Note:

Immunogen Sequence Homology: Human: 100%

Product images:


WB Suggested Anti-NUFIP1 Antibody Titration:
0.2-1 ug/ml; ELISA Titer: 1:312500; Positive
Control: Transfected 293T

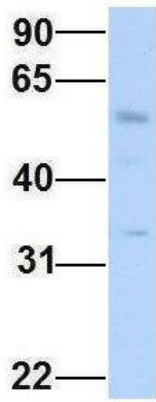
NUFIP1



Rabbit Anti-NUFIP1
Sample Type: Human Fetal Brain
Antibody Concentration: 1ug/mL

Host: Rabbit; Target Name: NUFIP1; Sample
Tissue: Human Fetal Brain; Antibody Dilution: 1.0
ug/ml

NUFIP1



Rabbit Anti-NUFIP1
Sample Type: Human Fetal Muscle
Antibody Concentration: 1ug/mL

Host: Rabbit; Target Name: NUFIP1; Sample Tissue: Human Fetal Muscle; Antibody Dilution: 1.0 ug/ml