

Product datasheet for **TA339452**

FOX B1 Rabbit Polyclonal Antibody

Product data:

Product Type:	Primary Antibodies
Applications:	WB
Recommended Dilution:	WB
Reactivity:	Human
Host:	Rabbit
Isotype:	IgG
Clonality:	Polyclonal
Immunogen:	The immunogen for anti-FOX B1 antibody: synthetic peptide directed towards the middle region of human FOX B1. Synthetic peptide located within the following region: ALPAPIPTLLSNSPPSLSPSSQTATSQSSPATPSETLTSPASALHSVAV
Formulation:	Liquid. Purified antibody supplied in 1x PBS buffer with 0.09% (w/v) sodium azide and 2% sucrose. <i>Note that this product is shipped as lyophilized powder to China customers.</i>
Concentration:	lot specific
Purification:	Protein A purified
Conjugation:	Unconjugated
Storage:	Store at -20°C as received.
Stability:	Stable for 12 months from date of receipt.
Predicted Protein Size:	35 kDa
Gene Name:	forkhead box B1
Database Link:	NP_036314 Entrez Gene 27023 Human Q99853
Background:	FOX B1 is a winged helix/forkhead transcription factor. FOX B1 is specifically expressed in the developing central nervous system (CNS). Early embryonic FOX B1 expression is restricted to the mammillary body region of the caudal hypothalamus, midbrain, hindbrain and spinal cord. FOX B1 may play a role in postnatal growth, lactation and CNS development.
Synonyms:	FKH5; HFKH-5

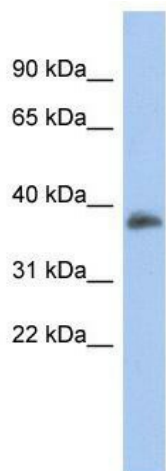


[View online »](#)

Note: Immunogen Sequence Homology: Dog: 100%; Pig: 100%; Rat: 100%; Horse: 100%; Human: 100%; Mouse: 100%; Bovine: 100%; Guinea pig: 100%; Zebrafish: 93%

Protein Families: Transcription Factors

Product images:



WB Suggested Anti-FOXB1 Antibody Titration: 0.2-1 ug/ml; ELISA Titer: 1:62500; Positive Control: Human Spleen