

Product datasheet for TA339451

DUX1 Rabbit Polyclonal Antibody

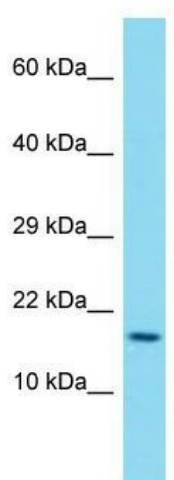
Product data:

Product Type:	Primary Antibodies
Applications:	WB
Recommended Dilution:	WB
Reactivity:	Human
Host:	Rabbit
Isotype:	IgG
Clonality:	Polyclonal
Immunogen:	The immunogen for Anti-DUX1 antibody is: synthetic peptide directed towards the N-terminal region of Human DUX1. Synthetic peptide located within the following region: QSDALRACFERNLYPGIATKEELAQGIDIPEPRVQIWFQNERSCQLRQHR
Formulation:	Liquid. Purified antibody supplied in 1x PBS buffer with 0.09% (w/v) sodium azide and 2% sucrose.
Concentration:	lot specific
Purification:	Protein A purified
Conjugation:	Unconjugated
Storage:	Store at -20°C as received.
Stability:	Stable for 12 months from date of receipt.
Predicted Protein Size:	19 kDa
Gene Name:	double homeobox 1
Database Link:	NP_036278 Entrez Gene 26584 Human O43812
Background:	The human genome contains hundreds of repeats of the 3.3-kb family in regions associated with heterochromatin. The DUX gene family, including DUX1, resides within these 3.3-kb repeated elements (Beckers et al., 2001 [PubMed 11245978]). See DUX4 (MIM 606009). [supplied by OMIM, Mar 2008]. ##Evidence-Data-START## Transcript exon combination :: AJ001481.1 [ECO:0000332] ##Evidence-Data-END##
Synonyms:	1; double homeobox


[View online »](#)

Note: Immunogen Sequence Homology: Human: 100%

Product images:



Host: Rabbit; Target Name: DUX1; Sample Tissue: Esophagus Tumor lysates; Antibody Dilution: 1.0 ug/ml