

Product datasheet for **TA339450**

GTF3C5 Rabbit Polyclonal Antibody

Product data:

Product Type:	Primary Antibodies
Applications:	IHC, WB
Recommended Dilution:	WB, IHC
Reactivity:	Human
Host:	Rabbit
Isotype:	IgG
Clonality:	Polyclonal
Immunogen:	The immunogen for anti-GTF3C5 antibody: synthetic peptide directed towards the N terminal of human GTF3C5. Synthetic peptide located within the following region: KVLMLRPEKEAFFHQELPLYIPPPIFSRLDAPVDYFYRPETQHREGYNNP
Formulation:	Liquid. Purified antibody supplied in 1x PBS buffer with 0.09% (w/v) sodium azide and 2% sucrose. <i>Note that this product is shipped as lyophilized powder to China customers.</i>
Concentration:	lot specific
Purification:	Protein A purified
Conjugation:	Unconjugated
Storage:	Store at -20°C as received.
Stability:	Stable for 12 months from date of receipt.
Predicted Protein Size:	60 kDa
Gene Name:	general transcription factor IIIC subunit 5
Database Link:	NP_036219 Entrez Gene 9328 Human Q9Y5Q8
Background:	Involved in RNA polymerase III-mediated transcription. Integral, tightly associated component of the DNA-binding TFIIIC2 subcomplex that directly binds tRNA and virus-associated RNA promoters.
Synonyms:	TFIIIC2-63; TFIIIC63; TFIIICepsilon

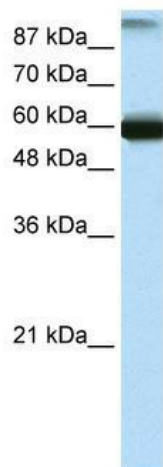


[View online »](#)

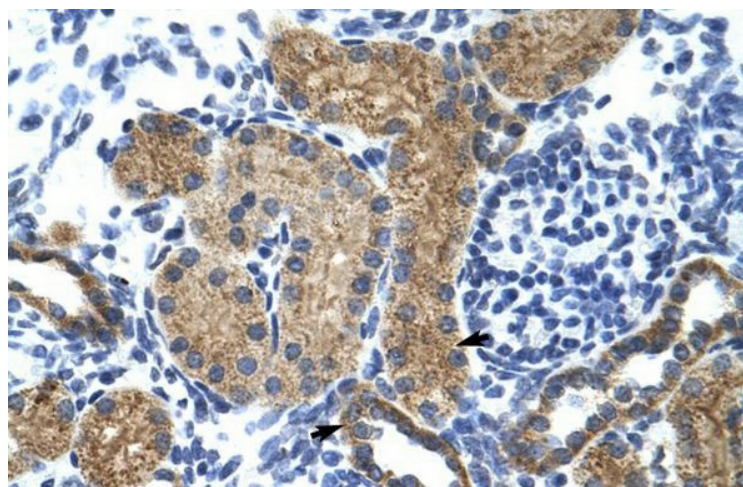
Note: Immunogen Sequence Homology: Human: 100%; Dog: 93%; Pig: 93%; Rat: 93%; Horse: 93%; Mouse: 93%; Rabbit: 93%; Guinea pig: 93%; Bovine: 86%

Protein Families: Transcription Factors

Product images:



WB Suggested Anti-GTF3C5 Antibody Titration:
0.2-1 ug/ml; ELISA Titer: 1:312500; Positive
Control: Transfected 293T



Human kidney