

Product datasheet for **TA339442**

ZNF146 Rabbit Polyclonal Antibody

Product data:

Product Type:	Primary Antibodies
Applications:	WB
Recommended Dilution:	WB
Reactivity:	Human
Host:	Rabbit
Isotype:	IgG
Clonality:	Polyclonal
Immunogen:	The immunogen for anti-ZNF146 antibody: synthetic peptide directed towards the middle region of human ZNF146. Synthetic peptide located within the following region: LTEHEKIHIGEKPFCSECGTAFGQKKYLIKHQNIHTGEKPYECNECGKA
Formulation:	Liquid. Purified antibody supplied in 1x PBS buffer with 0.09% (w/v) sodium azide and 2% sucrose. <i>Note that this product is shipped as lyophilized powder to China customers.</i>
Concentration:	lot specific
Purification:	Protein A purified
Conjugation:	Unconjugated
Storage:	Store at -20°C as received.
Stability:	Stable for 12 months from date of receipt.
Predicted Protein Size:	33 kDa
Gene Name:	zinc finger protein 146
Database Link:	NP_009076 Entrez Gene 7705 Human Q15072
Background:	ZNF146 (OZF) overexpression in tumours may alter the balance between hRap1 and other telomeric proteins; therefore OZF function may be linked to telomere regulation. ZNF146 is strongly overexpressed in many pancreas and colorectal cancers. Increased gene
Synonyms:	OZF

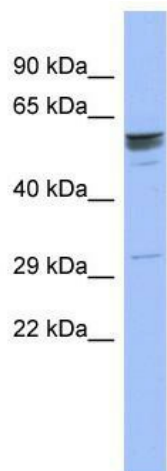


[View online »](#)

Note: Immunogen Sequence Homology: Dog: 100%; Pig: 100%; Rat: 100%; Horse: 100%; Human: 100%; Mouse: 100%; Bovine: 100%; Rabbit: 92%

Protein Families: Transcription Factors

Product images:



WB Suggested Anti-ZNF146 Antibody Titration:
0.2-1 ug/ml; ELISA Titer: 1:62500; Positive Control:
Human Stomach