

Product datasheet for TA339440

SSPN Rabbit Polyclonal Antibody

Product data:

Product Type:	Primary Antibodies
Applications:	WB
Recommended Dilution:	WB
Reactivity:	Human
Host:	Rabbit
Isotype:	IgG
Clonality:	Polyclonal
Immunogen:	The immunogen for anti-SSPN antibody: synthetic peptide directed towards the middle region of human SSPN. Synthetic peptide located within the following region: AHHYSQLTQFTCETTLDSCQCKLPSSSEPLSRTFVYRDVTDCTSVTGTFKL
Formulation:	Liquid. Purified antibody supplied in 1x PBS buffer with 0.09% (w/v) sodium azide and 2% sucrose.
Concentration:	lot specific
Purification:	Protein A purified
Conjugation:	Unconjugated
Storage:	Store at -20°C as received.
Stability:	Stable for 12 months from date of receipt.
Predicted Protein Size:	26 kDa
Gene Name:	sarcospan
Database Link:	NP_005077 Entrez Gene 8082 Human Q14714
Background:	This gene encodes a member of the dystrophin-glycoprotein complex (DGC). The DGC spans the sarcolemma and is comprised of dystrophin, syntrophin, alpha- and beta-dystroglycans and sarcoglycans. The DGC provides a structural link between the subsarcolemmal cytoskeleton and the extracellular matrix of muscle cells. Two alternatively spliced transcript variants that encode different protein isoforms have been described. [provided by RefSeq, Oct 2008]



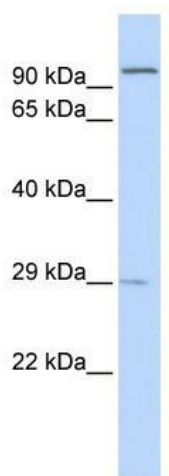
[View online »](#)

Synonyms: DAGA5; KRAG; NSPN; SPN1; SPN2

Note: Immunogen Sequence Homology: Pig: 100%; Rat: 100%; Human: 100%; Bovine: 100%; Rabbit: 100%; Dog: 93%; Mouse: 93%; Guinea pig: 93%; Horse: 79%

Protein Families: Druggable Genome, Transmembrane

Product images:



WB Suggested Anti-SSPN Antibody Titration: 0.2-1ug/mL; Positive control: 721_B cell lysate.