

## Product datasheet for **TA339438**

### OXA1L Rabbit Polyclonal Antibody

#### Product data:

Product Type:	Primary Antibodies
Applications:	WB
Recommended Dilution:	WB
Reactivity:	Human
Host:	Rabbit
Isotype:	IgG
Clonality:	Polyclonal
Immunogen:	The immunogen for Anti-OXA1L antibody is: synthetic peptide directed towards the C-terminal region of Human OXA1L. Synthetic peptide located within the following region: NAEMTRQLRERERQMRNQLELAARGPLRQTFTHNPLLQPGKDNPPNIPSS
Formulation:	Liquid. Purified antibody supplied in 1x PBS buffer with 0.09% (w/v) sodium azide and 2% sucrose. <i>Note that this product is shipped as lyophilized powder to China customers.</i>
Concentration:	lot specific
Purification:	Protein A purified
Conjugation:	Unconjugated
Storage:	Store at -20°C as received.
Stability:	Stable for 12 months from date of receipt.
Predicted Protein Size:	46 kDa
Gene Name:	OXA1L, mitochondrial inner membrane protein
Database Link:	<a href="#">NP_005006</a> <a href="#">Entrez Gene 5018 Human Q15070</a>
Background:	OXA1L is required for the insertion of integral membrane proteins into the mitochondrial inner membrane. It is essential for the activity and assembly of cytochrome oxidase and is required for the correct biogenesis of ATP synthase and complex I in mitochondria.
Synonyms:	OXA1



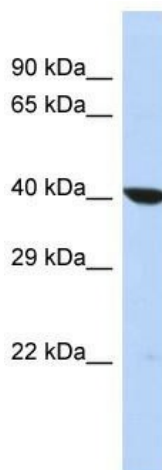
[View online »](#)

**Note:** Immunogen Sequence Homology: Dog: 100%; Pig: 100%; Rat: 100%; Horse: 100%; Human: 100%; Mouse: 100%; Rabbit: 100%; Guinea pig: 100%; Bovine: 93%; Zebrafish: 93%

**Protein Families:** Transmembrane

**Protein Pathways:** Protein export

### Product images:



Host: Rabbit

Target Name: OXA1L

Sample Tissue: HepG2 Cell Lysate

Antibody Dilution: 1.0 µg/ml

Host: Rabbit; Target Name: OXA1L; Sample Tissue: HepG2 Whole cell lysates; Antibody Dilution: 1.0 µg/ml; OXA1L is supported by BioGPS gene expression data to be expressed in HepG2