

## Product datasheet for **TA339435**

### ERp72 (PDIA4) Rabbit Polyclonal Antibody

#### Product data:

Product Type:	Primary Antibodies
Applications:	WB
Recommended Dilution:	WB
Reactivity:	Human
Host:	Rabbit
Isotype:	IgG
Clonality:	Polyclonal
Immunogen:	The immunogen for anti-PDIA4 antibody: synthetic peptide directed towards the middle region of human PDIA4. Synthetic peptide located within the following region: TAFKKGKLPVIKSQPVPKNNKGPVKVVVGKTFDSIVMDPKKDVLIIFYA
Formulation:	Liquid. Purified antibody supplied in 1x PBS buffer with 0.09% (w/v) sodium azide and 2% sucrose. <i>Note that this product is shipped as lyophilized powder to China customers.</i>
Concentration:	lot specific
Purification:	Protein A purified
Conjugation:	Unconjugated
Storage:	Store at -20°C as received.
Stability:	Stable for 12 months from date of receipt.
Predicted Protein Size:	73 kDa
Gene Name:	protein disulfide isomerase family A member 4
Database Link:	<a href="#">NP_004902</a> <a href="#">Entrez Gene 9601 Human</a> <a href="#">P13667</a>
Background:	The specific function of PDIA4 is not yet known.
Synonyms:	ERp-72; ERP70; ERP72
Note:	Immunogen Sequence Homology: Dog: 100%; Pig: 100%; Rat: 100%; Horse: 100%; Human: 100%; Mouse: 100%; Bovine: 100%; Rabbit: 100%; Guinea pig: 100%; Zebrafish: 93%

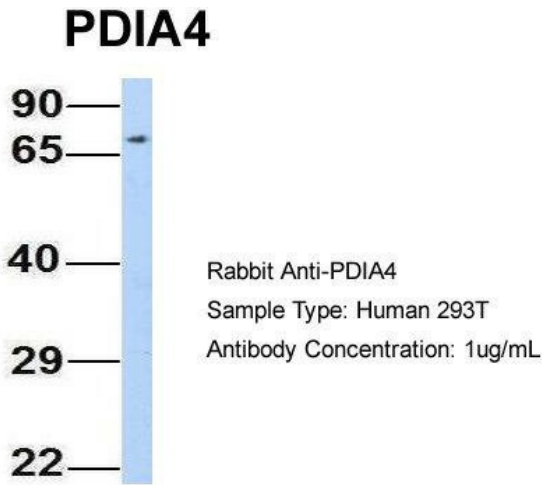


[View online »](#)

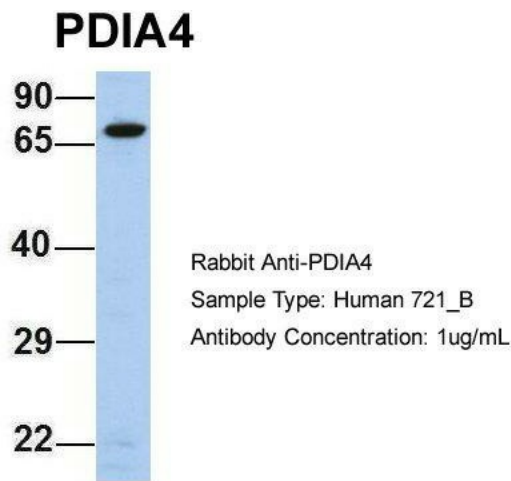
Protein Families: Druggable Genome, Transmembrane

Protein Pathways: Vibrio cholerae infection

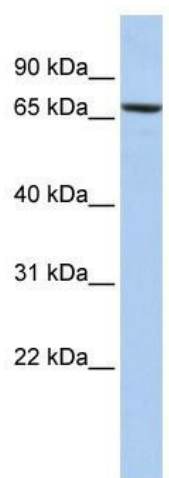
**Product images:**



Host: Rabbit; Target Name: PDIA4; Sample Tissue: 293T; Antibody Dilution: 1.0 ug/ml. PDIA4 is strongly supported by BioGPS gene expression data to be expressed in HEK293T



Host: Rabbit; Target Name: PDIA4; Sample Tissue: 721\_B; Antibody Dilution: 1.0 ug/ml. PDIA4 is strongly supported by BioGPS gene expression data to be expressed in Human 721\_B cells



WB Suggested Anti-PDIA4 Antibody Titration: 0.2-1 ug/ml; ELISA Titer: 1: 312500; Positive Control: HepG2 cell lysate. PDIA4 is supported by BioGPS gene expression data to be expressed in HepG2