

Product datasheet for **TA339433**

B4galt5 Rabbit Polyclonal Antibody

Product data:

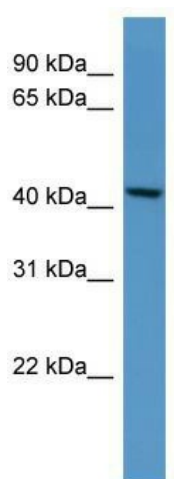
Product Type:	Primary Antibodies
Applications:	WB
Recommended Dilution:	WB
Reactivity:	Mouse
Host:	Rabbit
Isotype:	IgG
Clonality:	Polyclonal
Immunogen:	The immunogen for anti-B4galt5 antibody: synthetic peptide corresponding to a region of Mouse. Synthetic peptide located within the following region: GYSVSRPEGDTGKYKSIPHHHRGEVQFLGRYALLRKSKERQGLDGLNNLN
Formulation:	Liquid. Purified antibody supplied in 1x PBS buffer with 0.09% (w/v) sodium azide and 2% sucrose. <i>Note that this product is shipped as lyophilized powder to China customers.</i>
Concentration:	lot specific
Purification:	Protein A purified
Conjugation:	Unconjugated
Storage:	Store at -20°C as received.
Stability:	Stable for 12 months from date of receipt.
Predicted Protein Size:	45 kDa
Gene Name:	UDP-Gal:betaGlcNAc beta 1,4-galactosyltransferase, polypeptide 5
Database Link:	NP_062809 Entrez Gene 56336 Mouse Q9JMK0
Background:	Responsible for the synthesis of complex-type N-linked oligosaccharides in many glycoproteins as well as the carbohydrate moieties of glycolipids.
Synonyms:	B4Gal-T5; BETA4-GALT-IV; beta4Gal-T5; beta4GalT-V; gt-V; MGC138470



[View online »](#)

Note: Immunogen Sequence Homology: Dog: 100%; Pig: 100%; Rat: 100%; Horse: 100%; Human: 100%; Mouse: 100%; Bovine: 100%; Rabbit: 100%; Guinea pig: 93%; Zebrafish: 85%

Product images:



WB Suggested Anti-B4galt5 Antibody Titration:
0.2-1 ug/ml; ELISA Titer: 1: 62500; Positive
Control: Mouse Kidney